

INTERNALLY MOUNTED PLASTIC NEMA 4X ENCLOSURES FOR PRECISION DIGITAL METERS



PDA2407-PDA2415 ENCLOSURES

These NEMA 4X enclosures provide a high degree of protection against the harsh operating environment of an industrial plant. The Precision Digital meters are mounted inside the enclosure for maximum protection. The clear cover is held in place with four screws.

Meter Types

Type	Meters
A	PD118, PD690, PD691, PD692, PD693, PD750, PD751, and PD752
B	PD542, PD543, and PD562
C	PD603, PD644, PD683, PD684, PD688, PD689, PD743, PD765, and PD865
D	PD138, PD154, and PD158
E	PD6000, PD6200, PD6300, and PD7000

ENCLOSURE DIMENSIONS

Note: All dimensions are in inches and millimeters (mm)

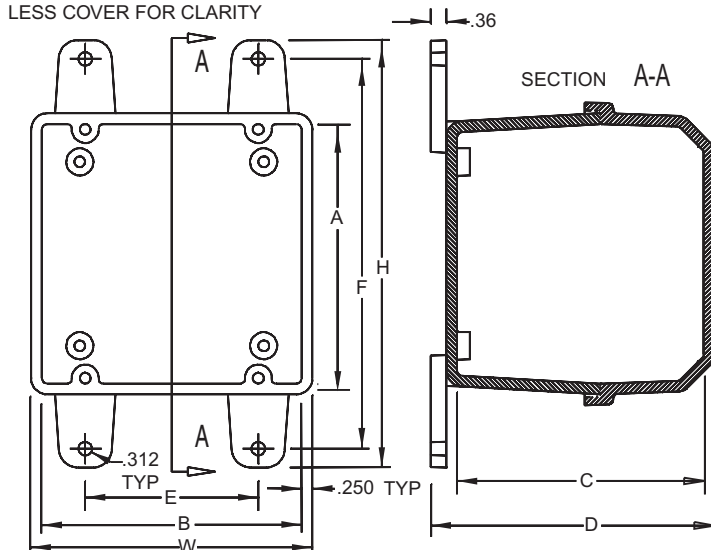
Model	Overall Outside Dimensions (with brackets) (H x W x D)	Inside Dimensions (A x B x C)	Mounting Dimensions (F x E)	Weight lb (kg)
PDA2407	9.9 x 6.5 x 6.7 (251 x 165 x 170)	6.0 x 6.0 x 5.9 (152 x 152 x 151)	9.0 x 4.0 (228 x 102)	2.4 (1.1)
PDA2408				
PDA2409	13.9 x 8.5 x 6.7 (352 x 216 x 170)	10.0 x 8.0 x 5.9 (254 x 203 x 151)	13.0 x 6.0 (330 x 152)	4.1 (1.8)
PDA2410				
PDA2411				
PDA2412				
PDA2414				
PDA2415	15.9 x 10.5 x 7.7 (403 x 267 x 195)	12.0 x 10.0 x 6.9 (305 x 254 x 176)	15.0 x 8.0 (381 x 203)	5.6 (2.5)

ORDERING INFORMATION

PDA2407-2415 NEMA 4X Enclosures							
Model	Description	# of Meters	Type				
			A	B	C	D	E
PDA2407	Plastic NEMA 4X Enclosure	1	•	•	•	•	•
PDA2408	Plastic NEMA 4X Enclosure	2		•			
PDA2409	Plastic NEMA 4X Enclosure	3		•			
PDA2410	Plastic NEMA 4X Enclosure	4		•			
PDA2411	Plastic NEMA 4X Enclosure	2	•	•	•	•	•
PDA2412	Plastic NEMA 4X Enclosure	3	•				
PDA2414	Plastic NEMA 4X Enclosure	2	•	•	•	■	•
PDA2415	Plastic NEMA 4X Enclosure	4	•				

• Available ■ 1 Standard

PLAN VIEW SHOWN
LESS COVER FOR CLARITY



Disclaimer

The information contained in this document is subject to change without notice. Precision Digital Corporation makes no representations or warranties with respect to the contents hereof, and specifically disclaims any implied warranties of merchantability or fitness for a particular purpose. ©2009 Precision Digital Corporation. All rights reserved.

Your Local Distributor is:

Order from:

C A Briggs Company

622 Mary Street; Suite 101
Warminster, PA 18974

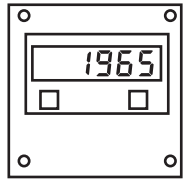
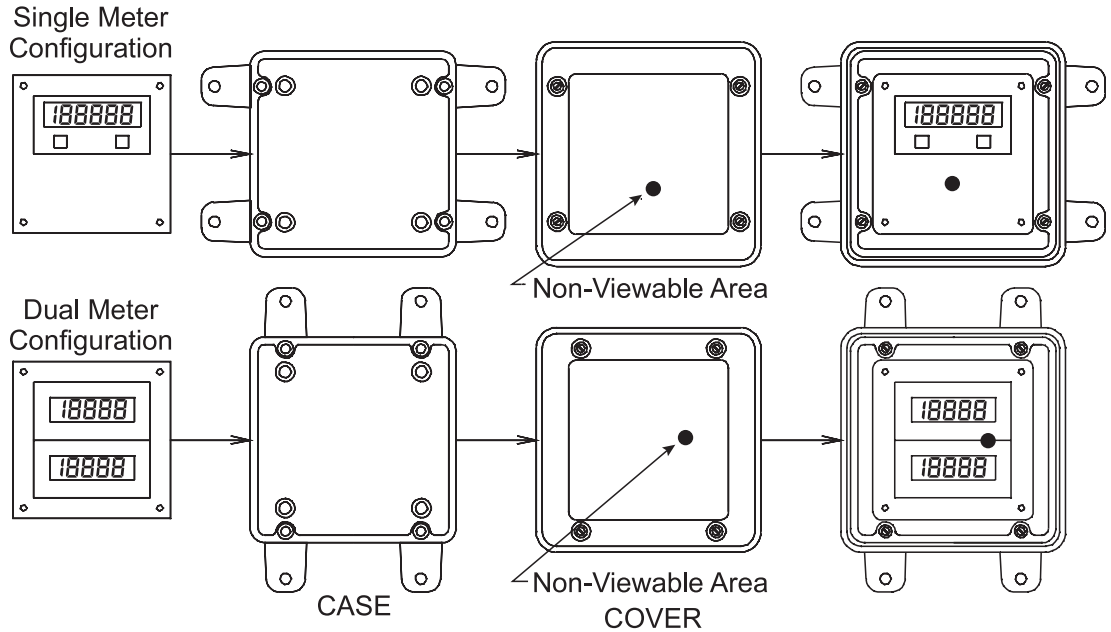
Phone: 267-673-8117 - Fax: 267-673-8118

Sales@cabriggs.com - www.cabriggs.com

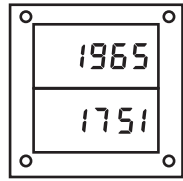
INTERNALLY MOUNTED PLASTIC NEMA 4X ENCLOSURES FOR PRECISION DIGITAL METERS

NOTES:

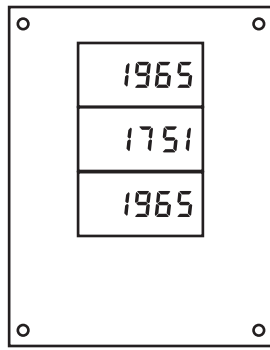
1. Prior to drilling the hole for the conduit, align the display for best viewing through clear cover as shown.
2. Position the meter(s) such that the nonviewable area does not obstruct the displays.
3. Prior to drilling the hole for the conduit, consider the following: The dual meter configuration may be used for a single meter in the event that an additional meter is installed in the future. This will eliminate the need to re-position the case or conduit hole.



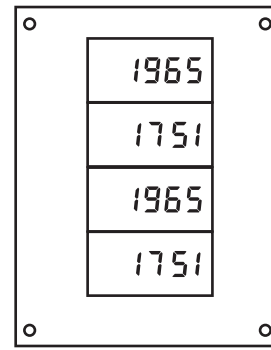
PDA2407



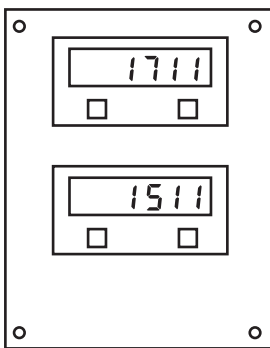
PDA2408



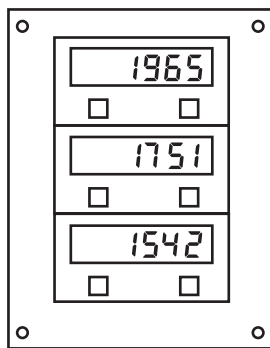
PDA2409



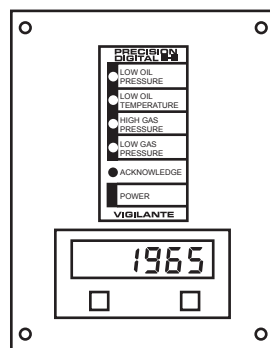
PDA2410



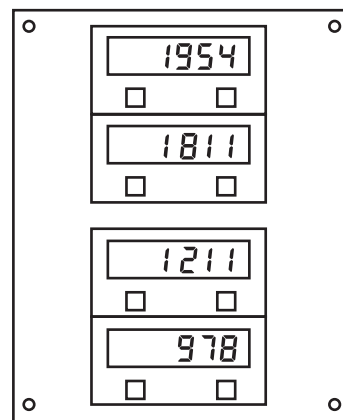
PDA2411



PDA2412



PDA2414



PDA2415

LIM2405-15_D 07/09