



## SMALL CASE MOUNTING BRACKET KIT

**MADE IN  
THE U.S.A.**



The Mounting Bracket Kit provides a simple and economical method of securing an Alternating Relay to the deadfront of a control panel.

### TYPICAL APPLICATIONS

- Where the lead select switch and/or Alternator test switch must be on the deadfront.

### COST SAVINGS!

Punch one hole, attach bracket kit. Compare this to material costs of two switches, multiple contact blocks, labor to wire from deadfront door to Alternator, plus engineering time drawing switches into electrical schematic.

### FEATURES

- Sturdy aluminum construction
- Stainless steel stud pressed fit into bracket faceplate
- Mounting hardware included
- Very fine textured painted surface
- Color - White

### ORDERING INFORMATION

Part Number: DFB-W

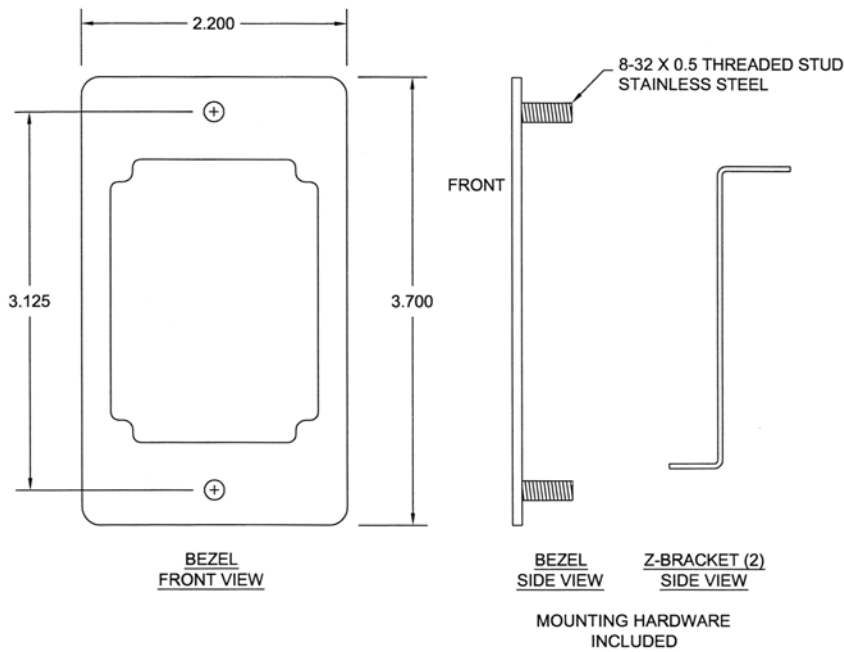
### SOCKETS\*

(MUST BE ORDERED SEPARATELY)

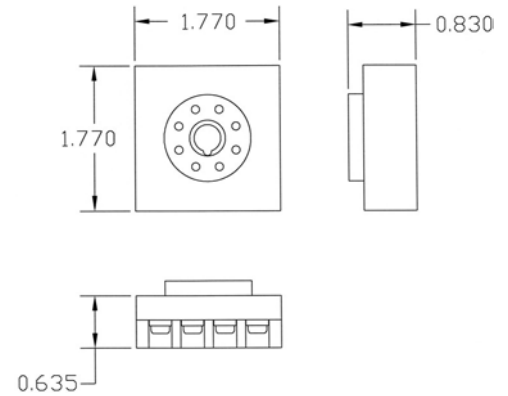
8 Pin Reverse Mount – P3G-08  
11 Pin Reverse Mount – P3GA-11

\* For customer savings analysis, subtract cost of regular socket from cost of reverse mounted socket.

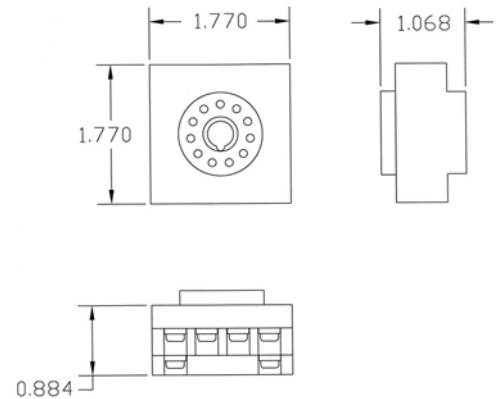
## BRACKET KIT



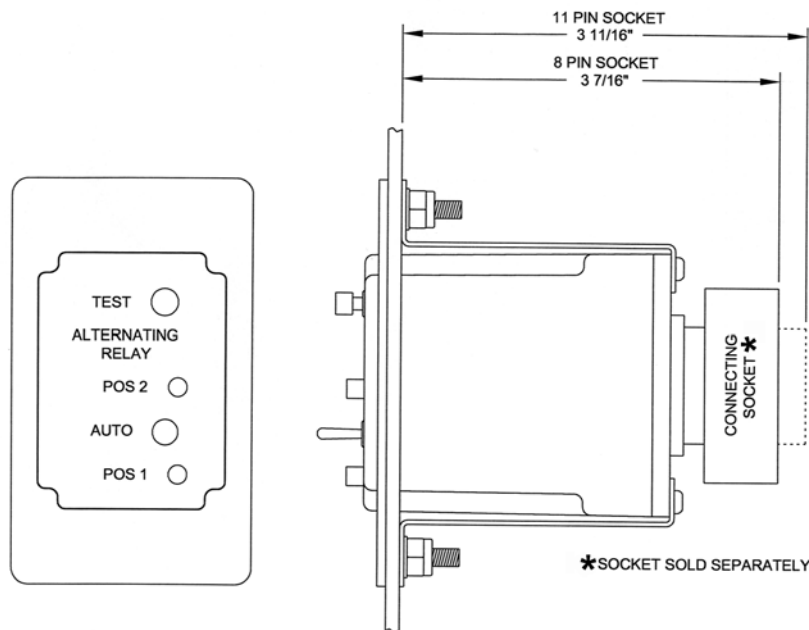
## SOCKET - P3G-08



## SOCKET - P3GA-11



## INSTALLATION DIAGRAM



## INSTALLATION INSTRUCTIONS

- 1 Attach both Z-brackets to Alternator.
- 2 Cut and drill holes in panel door per installation template.
- 3 Hold the bezel over front of hole cut into deadfront.
- 4 Insert the Alternator through the back of hole.
- 5 Fasten assembly to panel door using hardware provided.



**MADE IN  
THE U.S.A.**

## HARDWARE

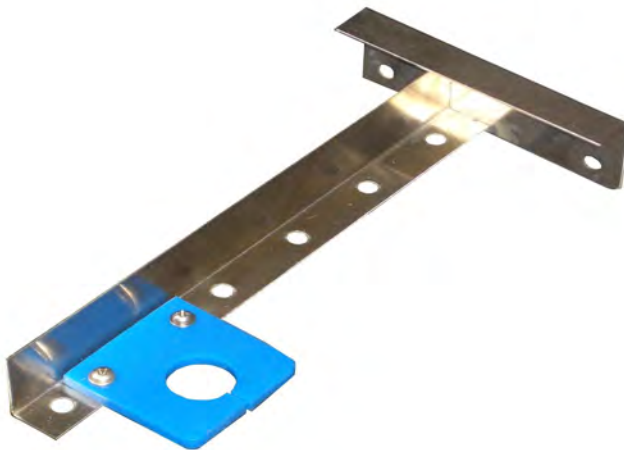


**LEVEL PROBE  
BRACKET (SMALL),  
LPB-1**

**Bracket Material:  
304S.S.**

**Squeegee Material:  
Urethane Rubber**

**Hardware:  
8/32 S.S.**



**LEVEL PROBE  
BRACKET (LARGE),  
LPB-2**

**Bracket Material:  
304S.S.**

**Squeegee Material:  
Urethane Rubber**

**Hardware:  
8/32 S.S.**



**S HOOK**

**Material:  
1/4 in. Round Stock,  
304 S.S.**



## MPE Panel Air Vent

**MADE IN  
THE U.S.A.**



### DESCRIPTION

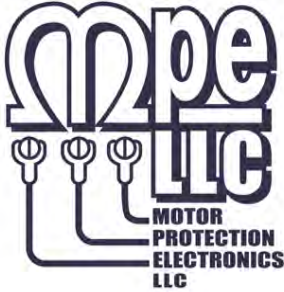
The MPE Panel Air Vent is made of an ABS plastic, type ASA that is commonly used to mold exterior automotive parts, resulting in a product that will have a long life when exposed to outdoor conditions. The air vent comes with a foam screen insert filter for use in control panel ventilation. This popular air vent had been discontinued by the previous manufacturer, and has been retooled by M.P. Electronics for their OEM customers.

### SPECIFICATIONS

Dimension, Width:	5.0 Inches
Dimension, Thickness:	1.25 Inches
Material:	ABS Plastic, type ASA (Outdoor ABS)
Color:	Black
Filter Type:	Foam, 20ppi, 1/4 inch thick, Charcoal color
NEMA Rating:	NEMA 1

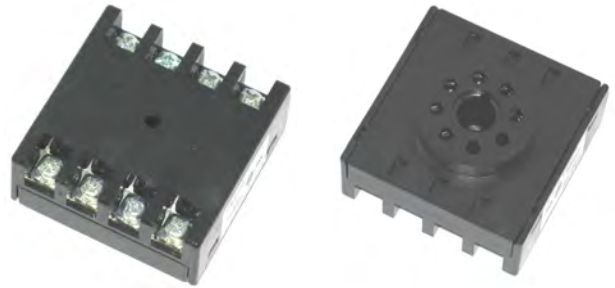
### ORDERING INFORMATION

Part Number: MPE Air Vent

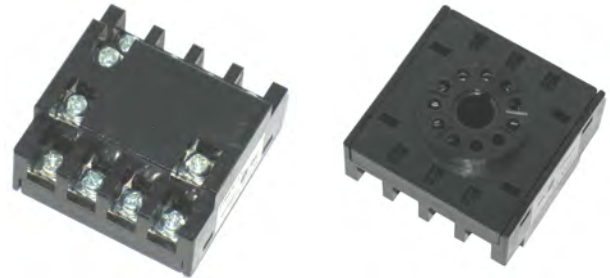


## SOCKETS

**Part Number: P3G-08**  
**8 Pin, Reverse Mount**  
**Rating: 6A, 250VAC**  
**UL Recognized, CSA**



**Part Number: P3GA-11**  
**11 Pin, Reverse Mount**  
**Rating: 6A, 250VAC**  
**UL Recognized, CSA**



**Part Number: PF083A-E**  
**8 Pin, Din-Rail Mount**  
**with holes for locking clips**  
**Rating: 10A , 250V**  
**UL Recognized, CSA**



**Part Number: 70-464-1**  
**8 Pin, Din-Rail Mount**  
**Rating: 10A , 600V**  
**UL Recognized**  
**USA, Canada**



**Part Number: SR3P-05**  
**11 Pin, Din-Rail Mount**  
**Rating: 10A , 300V**  
**UL Recognized, CSA**





## SOCKETS

**Part Number: RB08-PC**

**8 Pin, Surface Mount**

**Rating: 10A , 600V**

**UL Recognized, CSA**

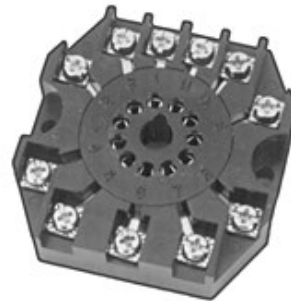


**Part Number: RB11-PC**

**11 Pin, Surface Mount**

**Rating: 10A , 300V**

**UL Recognized, CSA**



**Part Number: SD12-PC**

**12 Pin, Surface Mount**

**Rating: 10A , 600V**

**UL Recognized, CSA**

