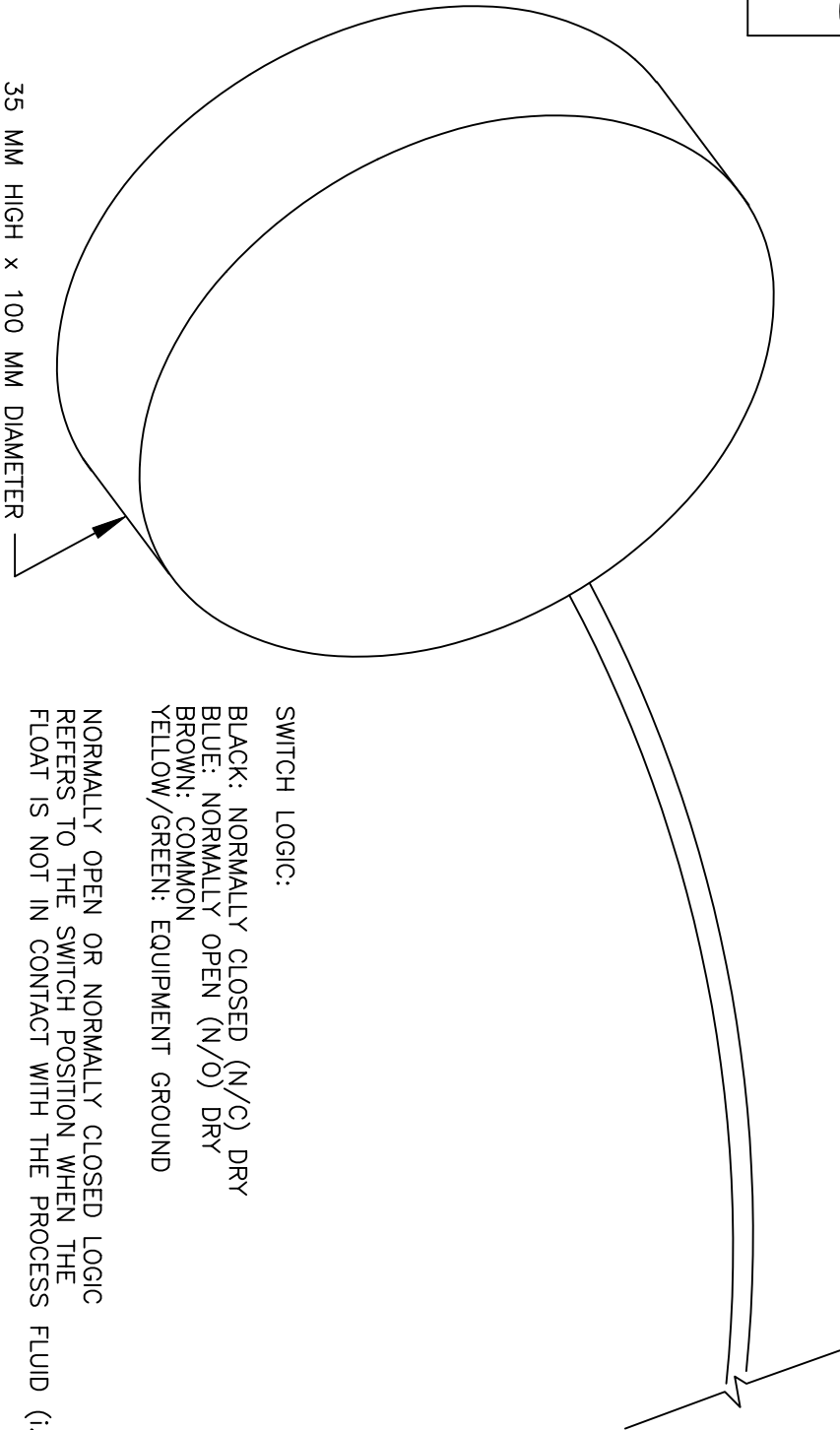


TANK

← MOUNTING LOCATION - TANK WALL SHOWN

CONDITION 1:
LIQUID LEVEL BELOW MOUNTING LOCATION (i.e. "Dry");
SWITCH STATUS OPEN OR CLOSED (SPDT)
DEPENDENT UPON WIRING CONFIGURATION

CONDITION 2:
LIQUID LEVEL AT OR ABOVE MOUNTING
LOCATION; SWITCH STATUS REVERSED



35 MM HIGH x 100 MM DIAMETER

SWITCH LOGIC:

BLACK: NORMALLY CLOSED (N/C) DRY
 BLUE: NORMALLY OPEN (N/O) DRY
 BROWN: COMMON
 YELLOW/GREEN: EQUIPMENT GROUND

NORMALLY OPEN OR NORMALLY CLOSED LOGIC
 REFERS TO THE SWITCH POSITION WHEN THE
 FLOAT IS NOT IN CONTACT WITH THE PROCESS FLUID (i.e. "Dry")

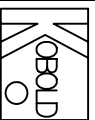
Order from: **C A Briggs Company**

622 Mary Street; Suite 101; Warminster, PA 18974

Phone: 267-673-8117 - Fax: 267-673-8118

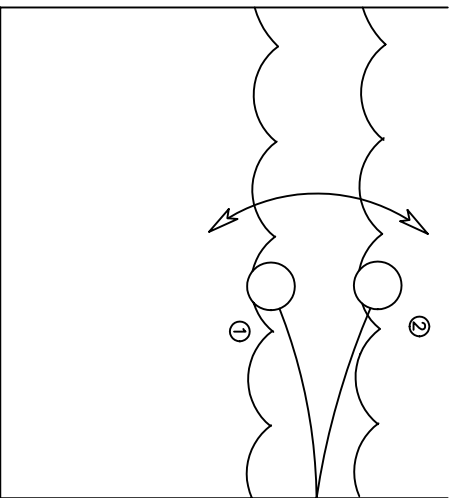
Sales@cabriggs.com - www.cabriggs.com

MODEL: NSM-5101
 MATERIAL: POLYPROPYLENE FLOAT, POLYAMIDE CABLE GLAND, 6' NEOPRENE CABLE
 SPECIFIC GRAVITY: 0.6 MINIMUM
 SWITCH TYPE: SPDT MECHANICAL SWITCH, MAX. 250 VAC/6A, 400 VAC/4A, 100mA MIN.
 MAX. PRESSURE/TEMP: 45 PSIG/140°F



KOBOLD INSTRUMENTS, INC.
 1801 Parkway View Drive
 Pittsburgh, PA 15205

MODEL: NSM-5101	DATE: 3/28/11
DESC: SWITCH, FLOAT	REV: 1
SCALE: NTS	DWG: nsmfloat
DRAWN: EAS	

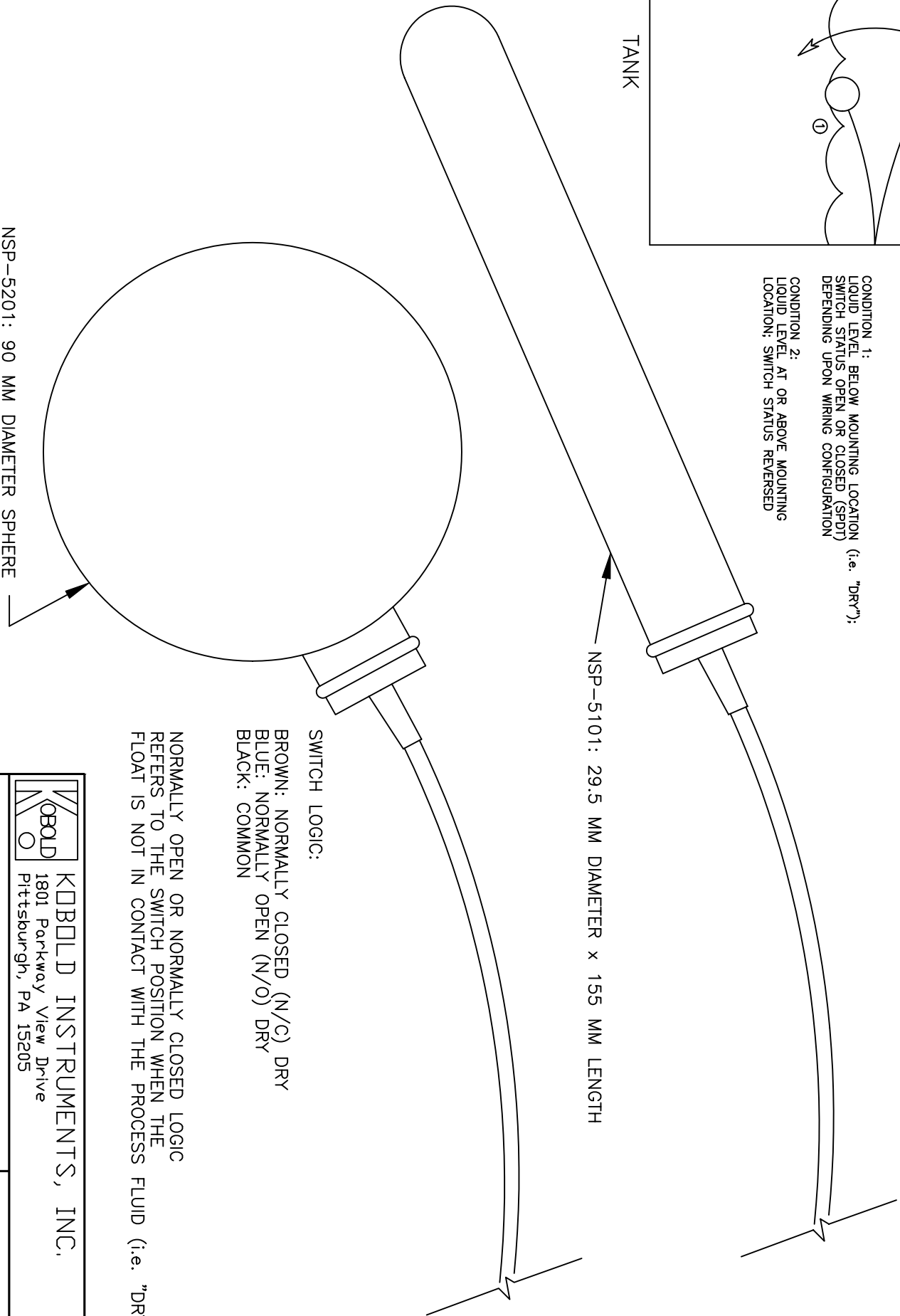


← MOUNTING LOCATION - TANK WALL SHOWN

CONDITION 1:
LIQUID LEVEL BELOW MOUNTING LOCATION (i.e. "DRY");
SWITCH STATUS OPEN OR CLOSED (SPDT)
DEPENDENT UPON WIRING CONFIGURATION

CONDITION 2:
LIQUID LEVEL AT OR ABOVE MOUNTING
LOCATION; SWITCH STATUS REVERSED

TANK



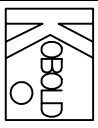
NSP-5201: 90 MM DIAMETER SPHERE

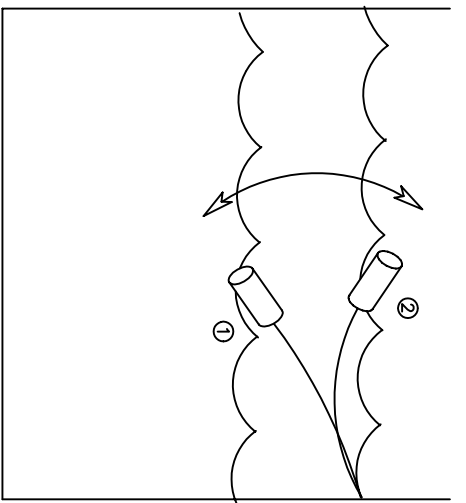
NSP-5101: 29.5 MM DIAMETER x 155 MM LENGTH

SWITCH LOGIC:
BROWN: NORMALLY CLOSED (N/C) DRY
BLUE: NORMALLY OPEN (N/O) DRY
BLACK: COMMON

NORMALLY OPEN OR NORMALLY CLOSED LOGIC
REFERS TO THE SWITCH POSITION WHEN THE
FLOAT IS NOT IN CONTACT WITH THE PROCESS FLUID (i.e. "DRY")

MODEL: NSP-5101, NSP-5201
MATERIAL: POLYPROPYLENE FLOAT, 13' (4M) TPK CABLE
SPECIFIC GRAVITY: NSP-5101, 0.9 MIN, NSP-5201, 0.6 MIN.
SWITCH: SPDT MECHANICAL MAX. 250 VAC/150 VDC, 300 VA, 60 W, 1 mA to 1.5 A
MAX. PRESSURE/TEMP: NSP-5101, 15 PSIG/140°F, NSP-5201, 30 PSIG/140°F

 KOBOLD INSTRUMENTS, INC. 1801 Parkway View Drive Pittsburgh, PA 15205	
MODEL: NSP-5101, NSP-5201	DATE: 3/28/11
DESC: SWITCH, FLOAT	REV: 2
SCALE: NTS	DRAWN: EAS
	DWG: nspflood

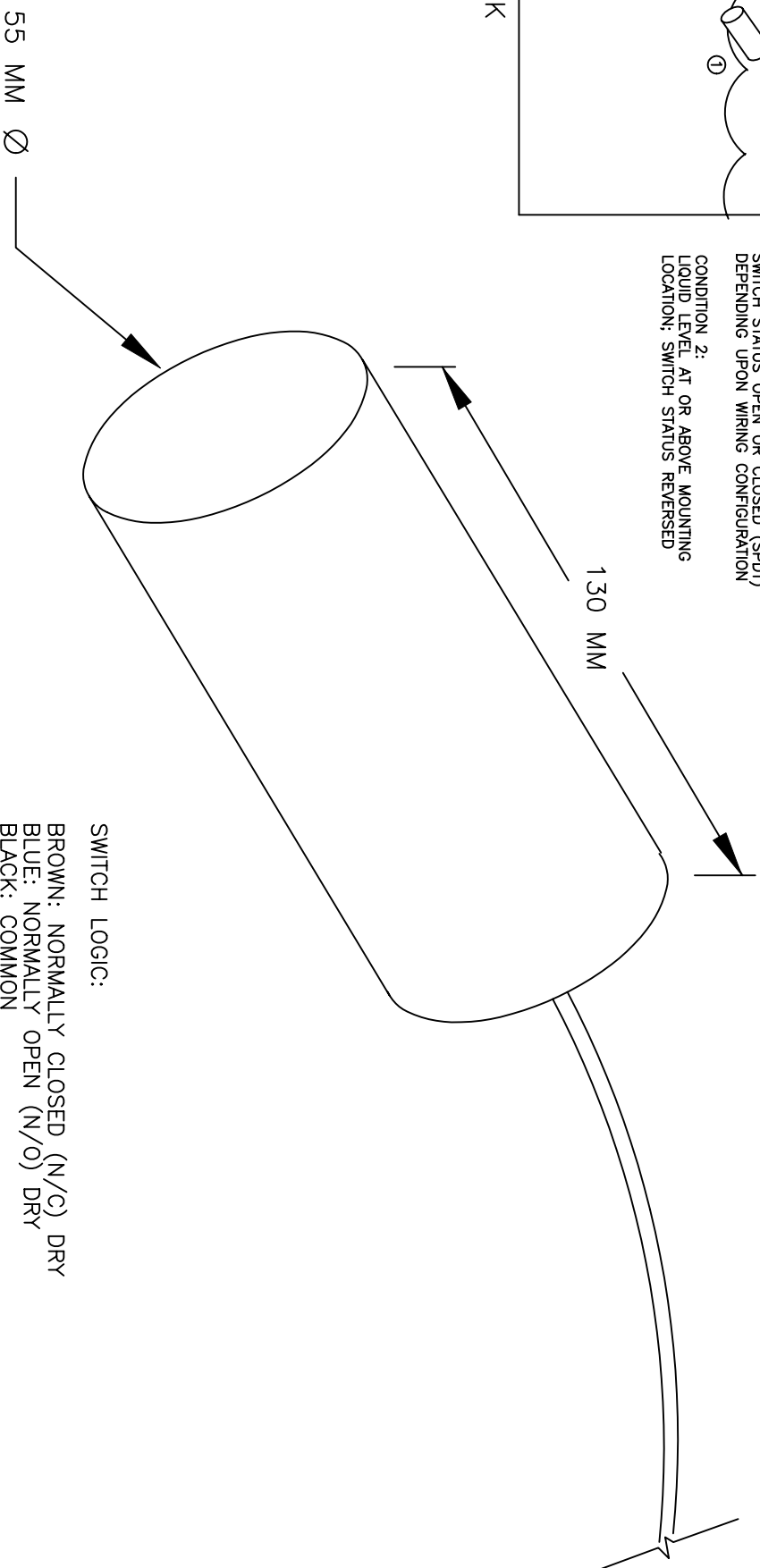


TANK

— MOUNTING LOCATION — TANK WALL SHOWN

CONDITION 1:
LIQUID LEVEL BELOW MOUNTING LOCATION (i.e. "DRY");
SWITCH STATUS OPEN OR CLOSED (SPDT)
DEPENDENT UPON WIRING CONFIGURATION

CONDITION 2:
LIQUID LEVEL AT OR ABOVE MOUNTING
LOCATION; SWITCH STATUS REVERSED



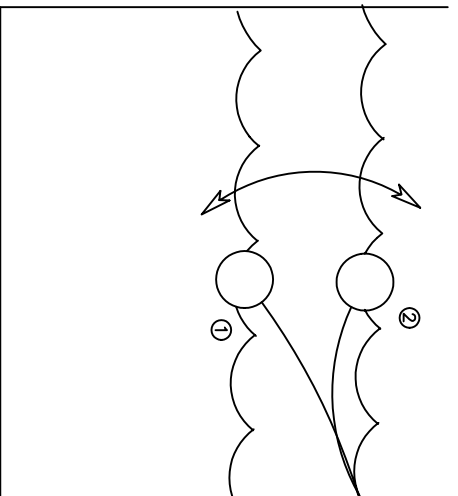
SWITCH LOGIC:
BROWN: NORMALLY CLOSED (N/C) DRY
BLUE: NORMALLY OPEN (N/O) DRY
BLACK: COMMON

NORMALLY OPEN OR NORMALLY CLOSED LOGIC
REFERS TO THE SWITCH POSITION WHEN THE
FLOAT IS NOT IN CONTACT WITH THE PROCESS FLUID (i.e. "DRY")

MATERIAL: PTFE FLOAT, 6' FEP CLAD CABLE
SPECIFIC GRAVITY: 0.79 MIN.
SWITCH TYPE: MECHANICAL (REED) SPDT SWITCH
SWITCH RATINGS: 4 to 250 VAC/VDC, 60 VA, 1 mA TO 1 A MAX.
MAX. PRESSURE/TEMP: 15 PSIG/302°F

KOBOLD INSTRUMENTS, INC.
1801 Parkway View Drive
Pittsburgh, PA 15205

MODEL: NST-5101	DATE: 3/28/11
DESC: FLOAT SWITCH	REV: 2
SCALE: NTS	DRAWN: EAS
	DWG: nstfloat

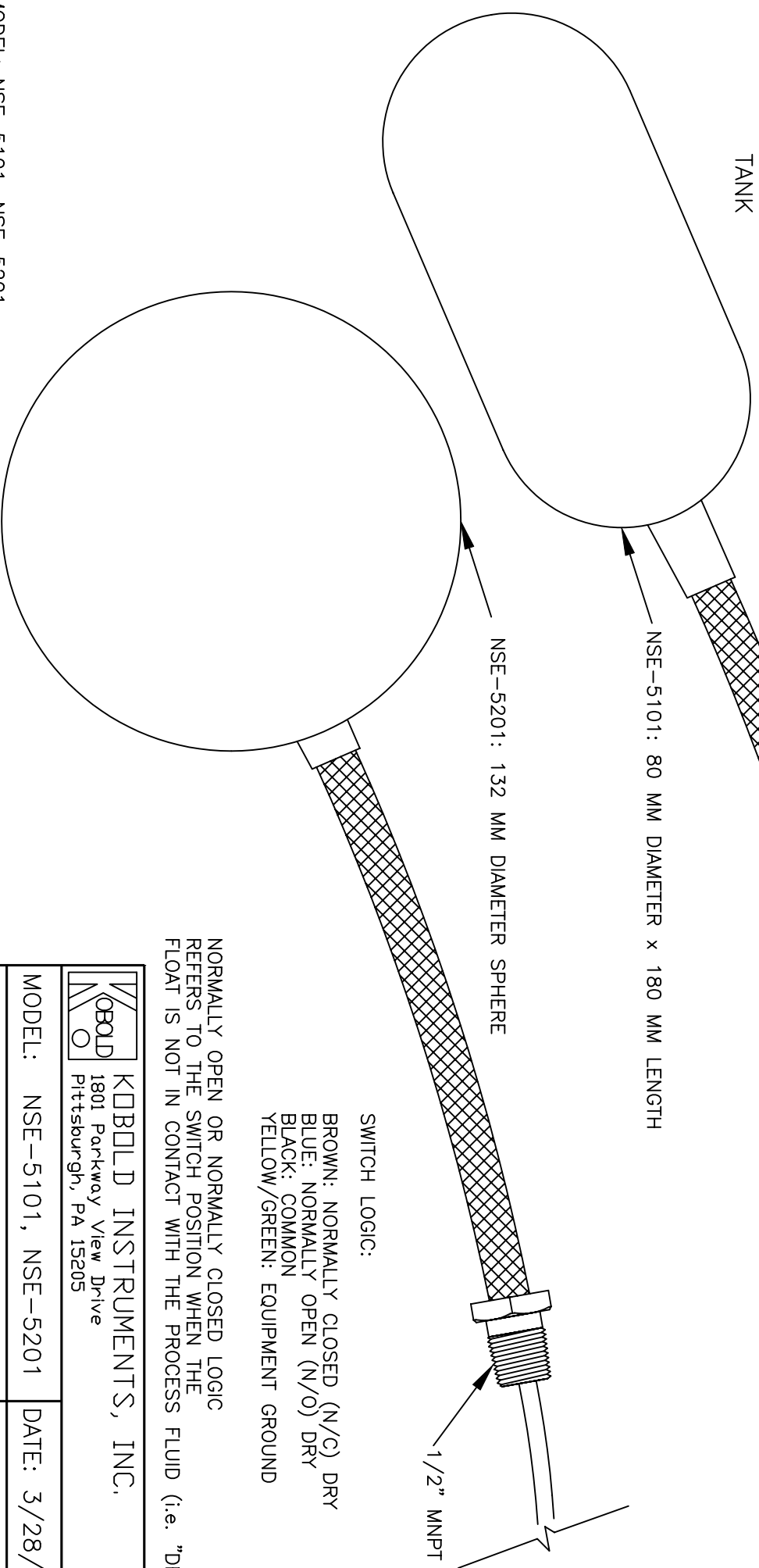


CONDITION 1:
 LIQUID LEVEL BELOW MOUNTING LOCATION (i.e. "DRY");
 SWITCH STATUS OPEN OR CLOSED (SPDT)
 DEPENDING UPON WIRING CONFIGURATION

CONDITION 2:
 LIQUID LEVEL AT OR ABOVE MOUNTING
 LOCATION; SWITCH STATUS REVERSED

← MOUNTING LOCATION - TANK WALL SHOWN

TANK



NSE-5201: 132 MM DIAMETER SPHERE

NSE-5101: 80 MM DIAMETER x 180 MM LENGTH

1/2" MNPT

1/2" MNPT

SWITCH LOGIC:
 BROWN: NORMALLY CLOSED (N/C) DRY
 BLUE: NORMALLY OPEN (N/O) DRY
 BLACK: COMMON
 YELLOW/GREEN: EQUIPMENT GROUND

NORMALLY OPEN OR NORMALLY CLOSED LOGIC
 REFERS TO THE SWITCH POSITION WHEN THE
 FLOAT IS NOT IN CONTACT WITH THE PROCESS FLUID (i.e. "DRY")

KOBOLD INSTRUMENTS, INC.
 1801 Parkway View Drive
 Pittsburgh, PA 15205

MODEL: NSE-5101, NSE-5201
 MATERIAL: 316-TI SS FLOAT, 6' SILICONE CABLE w/10" SS BRAIDED HOSE
 SPECIFIC GRAVITY: 0.8 MIN.
 SWITCH: MECHANICAL (REED) SPDT RATINGS: 4 to 250 VAC/VDC, 60 VA, 1 mA TO 1A MAX.
 MAX. PRESSURE/TEMP: NSE-5101, 87 PSIG/302°F, NSE-5201, 220 PSIG/302°F

MODEL:	NSE-5101, NSE-5201	DATE:	3/28/11
DESC:	SWITCH, FLOAT	REV:	2
SCALE:	NTS	DRAWN:	EAS
		DWG:	nsefloat