



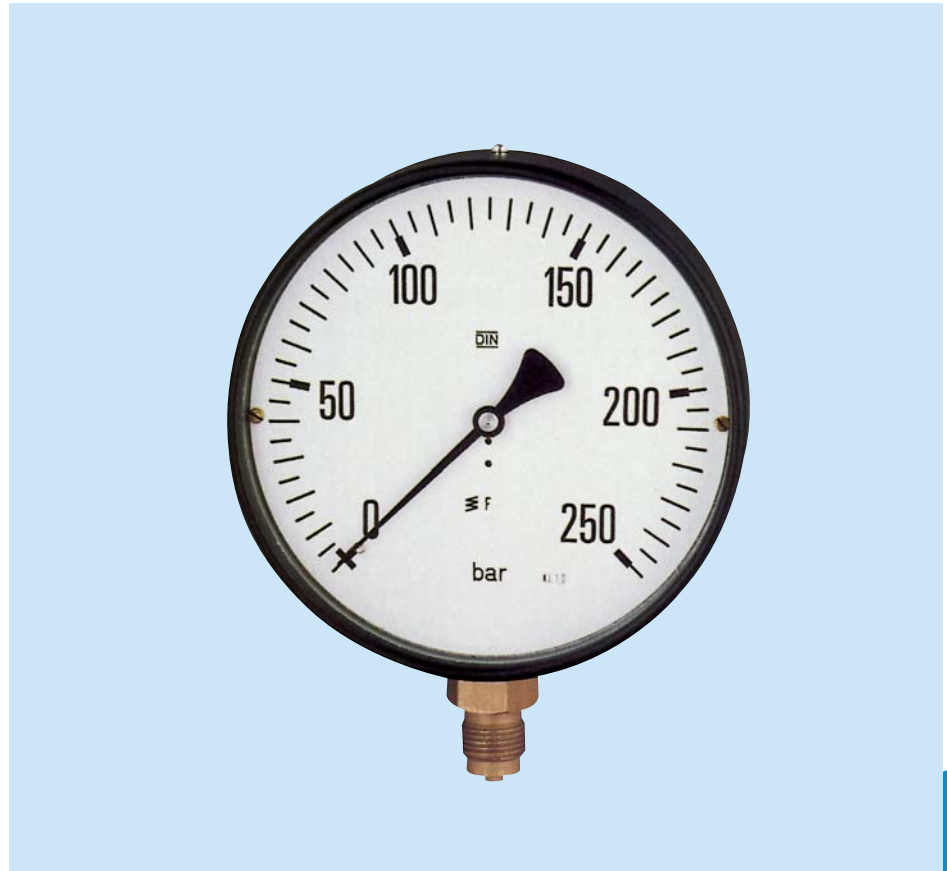
Features

- Economical Brass Construction with Aluminum Housing
- Large 6" Dial Face
- Pressures Up to 10,000 PSIG
- ±1.0% Accuracy
- Pulsation and Vibration Damping Through Optional Glycerin Filling

With its six inch face, the DRG64 pressure gauge is readily visible from across a room. An aluminum housing, copper bourdon tube element, and brass movement combine to keep the DRG64 affordable. Accuracy is kept at an uncompromising ±1.0% of full scale.

Mounting options abound: freestanding with fittings at either the bottom or rear, as well as rear fitting panel mountable versions. The panel mountable versions come in two styles; one bezel is fastened via screws, while the other uses a rear pressure bracket.

Pulsation and vibration in the medium may be accommodated with an optional glycerin filling for the indicator mechanism.



KOBOLD DRG64 Pressure Gauge

Specifications

Ranges: -14.7 to 10,000 PSIG (see table)

Over Pressure Protection

Momentary: 1.15 to 1.3 x range max.

Sensing Element: bourdon tube

Accuracy: ±1.0 % of full scale

Operating Temperature

Medium: freezing to 180°F

Ambient: freezing to 140°F

Fittings: 1/2" NPT

Materials of Construction

Wetted Parts

Element

< 1000 PSIG:: Copper

1000 PSIG & Up: Stainless Steel

Fitting: Cu Alloy

Exterior

Movement: Brass

Housing: Aluminum

Bezel: 304 SS

Standard: Copper

DRG64-4xxx: Copper

Pointer: Black aluminum

Indicator Dial: White aluminum

Window: Plexiglass

Options: Glycerin Damped Indicator Assembly

Order from: **C A Briggs Company**

622 Mary Street; Suite 101; Warminster, PA 18974

Phone: 267-673-8117 - 800-352-6265; Fax: 267-673-8118 Subject to change without prior notice.

Sales@cabriggs.com - www.cabriggs.com

DRG64

6" BRASS BOURDON TUBE PRESSURE GAUGE

DRG64 Ordering Information

DRG64 = Copper Element High Pressure Bourdon Tube Pressure Gauge

- 1 = 160 mm (6 inch) Dial Face, Bottom Process Connection
- 2 = 160 mm (6 inch) Dial Face, Rear Process Connection
- 3 = 160 mm (6 inch) Dial Face, Rear Process Connection with Flange Style Panel Mountable Bezel
- 4 = 160 mm (6 inch) Dial Face, Rear Process Connection with Compression Mountable Bezel

Range = Pressure Range Abbreviation

H00 = - 30" to 0" Hg	210 = 100 PSIG	260 = 600 PSIG	350 = 5000 PSIG
115 = 15 PSIG	216 = 160 PSIG	310 = 1000 PSIG	410 = 10000 PSIG
130 = 30 PSIG	220 = 200 PSIG	320 = 2000 PSIG	
160 = 60 PSIG	230 = 300 PSIG	330 = 3000 PSIG	

Available Measuring Ranges

F = Glycerin damped indicator assembly

Options

DRG64 -4 216 F **Sample DRG64 Specification**

Dimensions (mm)

