

Bi-Metal Temperature Switch for Liquids



measuring
•
monitoring
•
analyzing

TBS



- Switchpoints from 14...212 °F
- Process Connections:
G 1/4...G 1½, 1/4" NPT...1½" NPT
- Material: Brass or Stainless Steel
- Tolerance: ± 3 K
- Resetting Hysteresis: $6\text{ K} \pm 2\text{ K}$
- Highly Repeatable Setpoint
- Long Service Life



Order from: **C A Briggs Company**
622 Mary Street; Suite 101; Warminster, PA 18974
Phone: 267-673-8117 - Fax: 267-673-8118
Sales@cabriggs.com - www.cabriggs.com

KOBOLD Instruments, Inc.
1801 Parkway View Drive
Pittsburgh, PA 15205



Bi-Metal Temperature Switch Model TBS

Description

The KOBOLD TBS bi-metal temperature switches are used for temperature monitoring and control. The rugged, straightforward design is noted for having both long life and reliability. Bi-metal temperature switches have high repeatability as they are insensitive to the operating environment. Constructed with a rugged brass or stainless steel housing and internal G or NPT threads on both sides for inline installation, they are supplied with a 5' silicone jacketed cable for convenience. The temperature contacts have a fixed, factory-set switchpoint in intervals of 9 °F over the ranges of 14 °F to 122 °F and in intervals of 18 °F over the ranges of 122 °F to 212 °F.

Specifications

Wetted Materials

Housing:	Brass or Stainless Steel
Seal:	FKM
Cable:	5 ft. (1.5m) Silicone Jacketed (Longer Cable on Request)
Process Temperature:	-40...248 °F
Ambient Temperature:	-22...220 °F



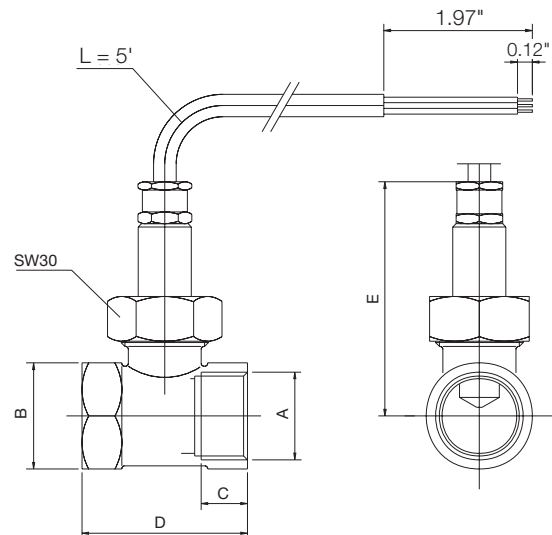
Maximum Pressure:	230 PSIG (Brass) 360 PSIG (Stainless Steel)
Tolerance:	± 3 K
Resetting Hysteresis:	6 K ± 2 K
Contact:	N/C (Opens on Rising Temperature)
Contact Rating:	Max. 240 VAC/ 24 VDC/ 1.3 A
Contact Resistance:	< 30 mOhm
Switching Cycles:	Max. 100,000 at Nominal Load
Electrical Protection:	NEMA 4X / IP65

Order Details (Example: TBS-11 N25 010)

Housing Material	Fitting Type		Switchpoint	
TBS-11.. = Brass	..N08.. = 1/4" NPT	..R08.. = G 1/4	..M10 = 14 °F (-10 °C)	..035 = 95 °F (35 °C)
	..N10.. = 3/8" NPT	..R10.. = G 3/8	..M05 = 23 °F (-5 °C)	..040 = 104 °F (40 °C)
	..N15.. = 1/2" NPT	..R15.. = G 1/2	..000 = 32 °F (0 °C)	..045 = 113 °F (45 °C)
	..N20.. = 3/4" NPT	..R20.. = G 3/4	..005 = 41 °F (5 °C)	..050 = 122 °F (50 °C)
TBS-12.. = Stainless Steel	..N25.. = 1" NPT	..R25.. = G 1	..010 = 50 °F (10 °C)	..060 = 140 °F (60 °C)
	..N32.. = 1 1/4" NPT	..R32.. = G 1 1/4	..015 = 59 °F (15 °C)	..070 = 158 °F (70 °C)
	..N40.. = 1 1/2" NPT	..R40.. = G 1 1/2	..020 = 68 °F (20 °C)	..080 = 176 °F (80 °C)
			..025 = 77 °F (25 °C)	..090 = 194 °F (90 °C)
		..030 = 86 °F (30 °C)	..100 = 212 °F (100 °C)	

Dimensions

Connection A (Internal Thread)	B	C	D	E Max.
1/4"	1.06"	0.39"	1.97"	3.03"
3/8"	1.06"	0.39"	1.97"	3.03"
1/2"	1.06"	0.39"	1.97"	3.03"
3/4"	1.26"	0.59"	2.05"	3.07"
1"	1.54"	0.59"	2.20"	3.19"
1 1/4"	1.81"	0.59"	1.97"	4.29"
1 1/2"	2.17"	0.59"	1.97"	4.57"



No responsibility taken for errors; subject to change without prior notice.