

## Rotating Vane Flow Indicator for Liquids



measuring  
•  
monitoring  
•  
analyzing

DIH



- Range: 0.05...0.13 GPM to 0.26...13.2 GPM (Water)
- Connection: 3/8" or 1" NPT
- Housing: Nickel-Plated Brass, Stainless Steel, or POM
- $P_{max}$ : 230 PSI
- $T_{max}$ : 176 °F
- $\Delta P$  at Max. Flow: 14.5 PSI



KOBOLD companies worldwide:

Order from: **C A Briggs Company**  
622 Mary Street; Suite 101; Warminster, PA 18974  
Phone: 267-673-8117 - Fax: 267-673-8118  
[Sales@cabriggs.com](mailto:Sales@cabriggs.com) - [www.cabriggs.com](http://www.cabriggs.com)

KOBOLD Instruments, Inc.  
1801 Parkway View Drive  
Pittsburgh, PA 15205



## Rotating Vane Flow Indicator Model DIH

### Key Features

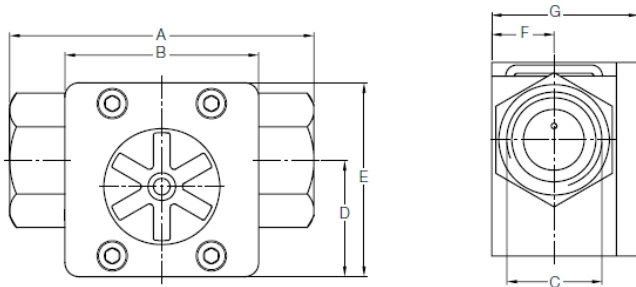
- Range: 0.05...0.13 GPM - 0.26...13.2 GPM Water
- Connection: 3/8" or 1" NPT
- Housing: Nickel-Plated Brass, Stainless Steel, or POM
- $P_{max}$ : 230 PSI
- $T_{max}$ : 176 °F
- $\Delta P$  at Max. Flow: 14.5 PSI



### Material Combination

	DIH-11...	DIH-12...	DIH-13...
Housing	Nickel plated brass	SS (1.4404)	POM
Cover	PMMA (Plexi)	PMMA (Plexi)	PMMA (Plexi)
Seal	NBR	FKM	NBR
Rotor	Polypropylene	Polypropylene	Polypropylene
Axle	Ceramic	Ceramic	Ceramic
$P_{max}$	230 PSI	230 PSI	230 PSI
$T_{max}$	176 °F	176 °F	176 °F

### Dimensions



Dimensions	3/8" NPT Conn. Models	1" NPT Conn. Models
A	84 mm	110 mm
B	60 mm	70 mm
C	3/8" NPT	1" NPT
D	40 mm	42 mm
E	60 mm	70 mm
F	19.5 mm	22.5 mm
G	41.5 mm	53 mm

### Order Details (Example: DIH-1108G N25)

Range GPM Water	Model Number			Connection
0.05...0.13	DIH-1101G..	DIH-1201G..	DIH-1301G..	..N10 = 3/8" NPT
0.08...0.52	DIH-1102G..	DIH-1202G..	DIH-1302G..	
0.13...1.3	DIH-1103G..	DIH-1203G..	DIH-1303G..	
0.26...3.2	DIH-1104G..	DIH-1204G..	DIH-1304G..	
0.26...4.8	DIH-1105G..	DIH-1205G..	DIH-1305G..	
0.26...5.8	DIH-1106G..	DIH-1206G..	DIH-1306G..	..N25 = 1" NPT
0.26...9.2	DIH-1107G..	DIH-1207G..	DIH-1307G..	
0.26...13.2	DIH-1108G..	DIH-1208G..	DIH-1308G..	