

AUTO-BIN-DICATOR®

Installation and Operation Sheet

INTRODUCTION

The Auto-Bin-Dicator® bulk material level control is a pressure sensitive diaphragm operated switch for use with free flowing medium and heavy bulk materials which will exert a minimum diaphragm actuating force of one pound. This unit is designed primarily for exterior side of bin mounting.

AGENCY APPROVALS



All Auto-Bin-Dicator® controls are listed by Underwriters' Laboratories, Inc. and Canadian Standards Association. The weatherproof models are listed for non-hazardous atmospheres. The explosion-proof models are listed for use in hazardous atmospheres, Class I, Groups C and D; and Class II, Groups E, F, and G.

This includes vapors of ethyl ether, gasoline, petroleum, alcohol, acetone, lacquer solvent, natural gas and atmospheres charged with grain dust, carbon black, coal or coke dust, and atmospheres containing metal dust, including aluminum, magnesium, and their commercial alloys.

PREVENTATIVE MAINTENANCE

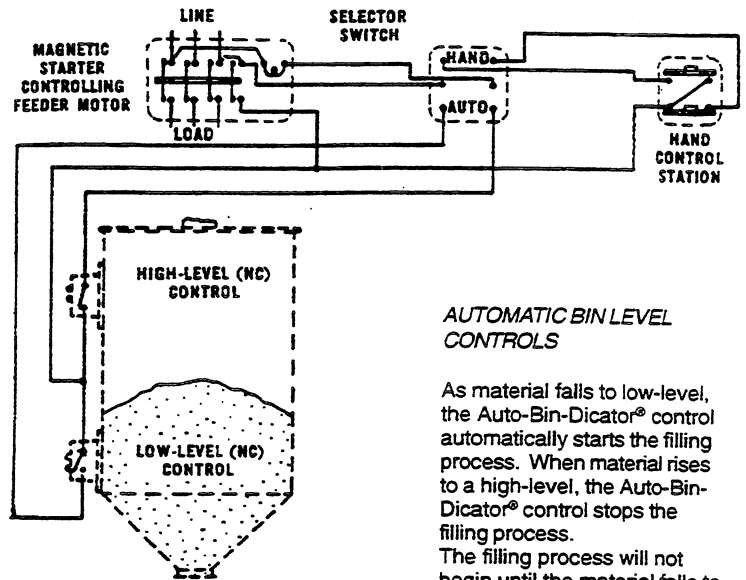
The Auto-Bin-Dicator® control is designed to provide many years of service-free life while used in normal applications. Semi-annual or annual inspection of the diaphragm, vent and switch circuit is recommended. Notes made during each inspection will provide the basis for a good preventive maintenance program based on your actual usage.

GUARANTEE

The Auto-Bin-Dicator® control is guaranteed against defective materials and workmanship, and products or parts not conforming to standard specifications will be corrected or replaced; provided that notice of such defects is given within 1 year from date of shipment.

Because BINDICATOR does not have control over method of use or operating conditions it cannot guarantee the length of effective service for each component of its products.

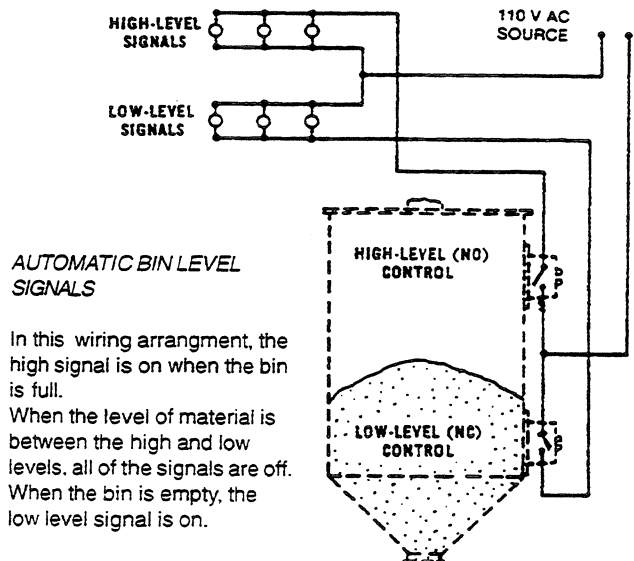
AUTOMATIC BIN LEVEL CONTROLS



AUTOMATIC BIN LEVEL CONTROLS

As material falls to low-level, the Auto-Bin-Dicator® control automatically starts the filling process. When material rises to a high-level, the Auto-Bin-Dicator® control stops the filling process. The filling process will not begin until the material falls to the low-level, then the cycle is repeated.

AUTOMATIC BIN LEVEL SIGNALS



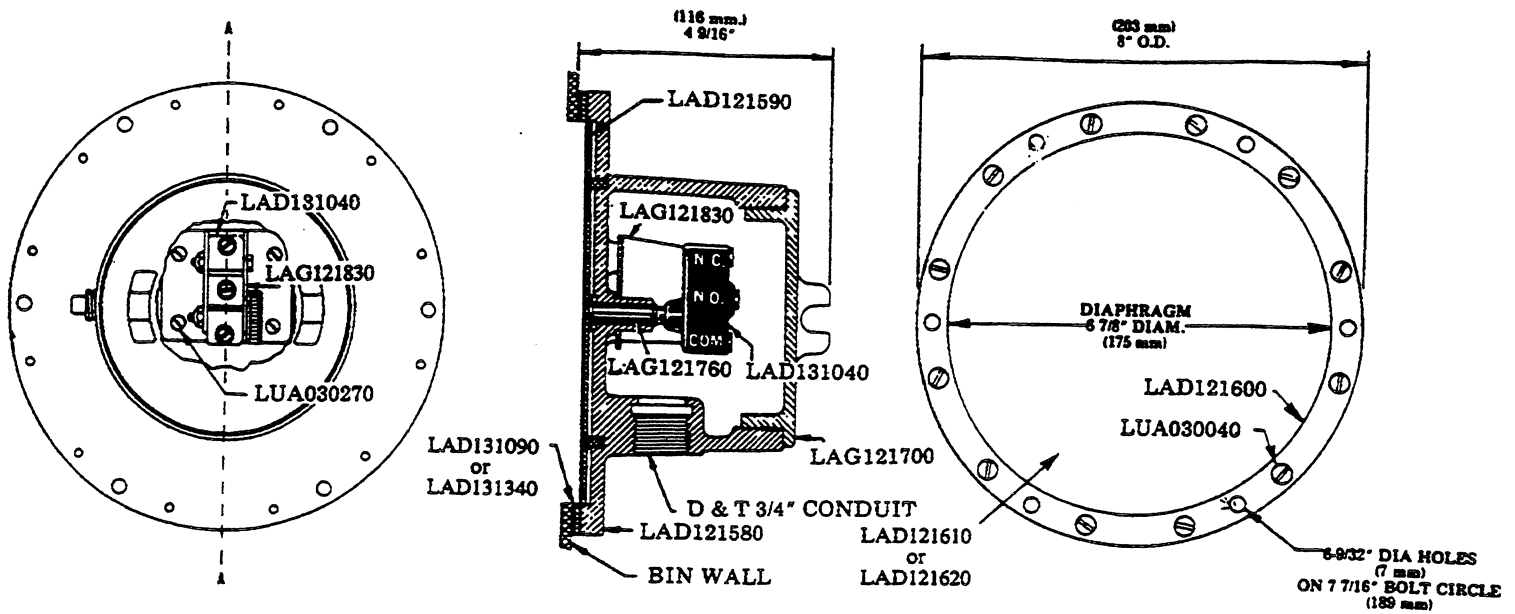
AUTOMATIC BIN LEVEL SIGNALS

In this wiring arrangement, the high signal is on when the bin is full. When the level of material is between the high and low levels, all of the signals are off. When the bin is empty, the low level signal is on.

Warning - Explosionproof Units

In hazardous locations, a seal fitting must be located within 18" of the control. To preserve the Explosionproof integrity of the unit we recommend that only the switch be replaced in the field.

OPERATION - INSTALLATION & WIRING INSTRUCTIONS



LOCATION

HIGH LEVEL AUTO-BIN-DICATOR® Control should be mounted low enough on the bin wall, so that material in its normal flow will cover the diaphragm and provide sufficient head of material before the high level signal is required.

LOW LEVEL AUTO-BIN-DICATOR® Control should be mounted high enough on the bin wall, so that material will completely clear the diaphragm before the low level signal is required.

To prevent excessive wear on parts of the Auto-Bin-Dicator® control exposed within the bin, mounting locations should be selected for the units out of the direct flow of material into the bin.

MOUNTING SURFACE PREPARATIONS

1. Mark two concentric circles on the bin wall at the point where the Auto-Bin-Dicator® control is to be mounted. One circle is to be 6 7/8" diameter; the other 7 7/16" diameter.

2. Cut out the 6 7/8"-diameter circle.

3. Lay out six equally spaced holes on 7 7/16" diameter circle. Drill or tap for 1/4" bolts or cap screws.

Note: Line A-A should be in a vertical plane.

BINDICATOR

—Level Instrumentation

150 Venture Boulevard
Spartanburg, SC 29306

Phone: (864) 574-8060, Fax: (864) 574-8063

Customer Service: (800) 778-9242

Internet: <http://www.bindicator.com>

email: sales@bindicator.com

MOUNTING OF UNIT

1. Insert the gasket between the bin wall and the flange of the Auto-Bin-Dicator® control and with the conduit facing down, fasten to the bin wall with 1/4" bolts or cap screws.

2. Connect conduit and make wiring connections at switch terminals.

3. Screw cover to housing securely to prevent damage from dust or moisture.

4. Check switch operation by manually depressing diaphragm and releasing. The switch should now respond to the application and release of one pound of pressure over the diaphragm.

PARTSLIST		
Part No.	Description	Qty Req'd
LAG121830	Switch Bracket Assembly	1
LAD121580	Frame	1
LAD121590	Back Plate	1
LAD121600	Washer	1
LAD1216XX	Diaphragm - Must Specify	1
LAG121700	Cover	1
LAG121760	Push Rod	1
LAD131030	Perimeter Spring (Not Shown)	4
LAD131040	Switch SP/DT (185 °F)	1
LAD131090	Gasket	1
LUA030040	Screw -10x24 x 3/8 F.H. Mach.	12
LUA030270	Screw - 8-32 x 3/8 Fillister HD.	4
LAD131340	Gasket for S.S. Diaphragm	1