

**BANTAM BIN-DICATOR®**

- 5 3/4" diameter
- 2 diaphragm material options
- Light duty

**AUTO-BIN-DICATOR®**

- 8" diameter
- Cast aluminum housing
- Neoprene or SS diaphragm material
- Medium duty

**MODEL 'A'**

- 10 1/4" diameter
- Explosion proof model avail.
- 7 diaphragm material options
- Heavy duty

DESCRIPTION The original electromechanical point level switch, Bin-Dicator® diaphragm-type level controls were the first to enjoy general usage in the industry. Bin-Dicator® controls eliminate bin overflow, empty bins, clogged conveyors, choked elevators and resulting damage and waste.

HOW IT WORKS The Bin-Dicator® control is a pressure actuated switch for use with free flowing bulk materials at atmospheric pressures. Actuation of the switch is the result of pressure exerted by the bulk material against the diaphragm assembly. De-actuation or switch release is a result of the bulk material clearing away from the diaphragm.

FEATURES AND BENEFITS**Simple and Rugged Construction**

- Can be mounted outside the bin for lower installation costs.

Simple Operating Mechanism

- Makes entire unit readily accessible for inspection, resulting in lower maintenance costs.

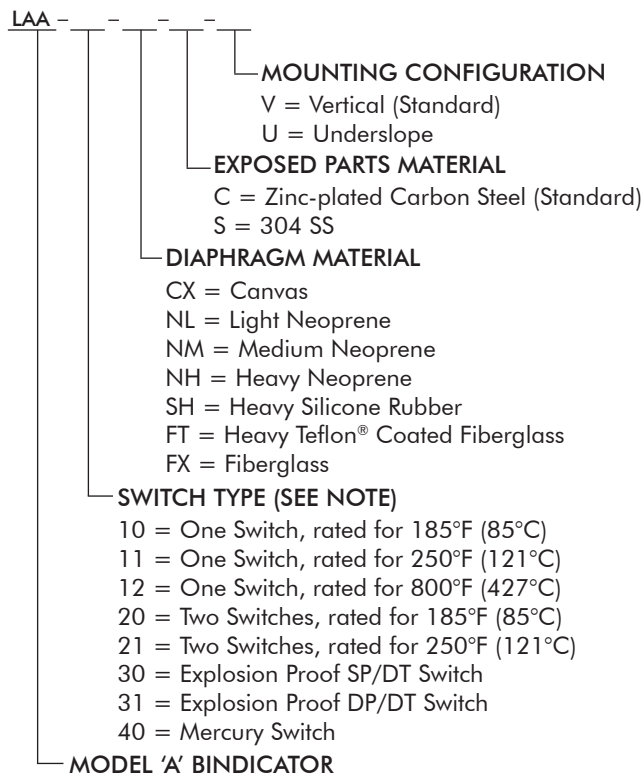
Many Variations Available

- For use in a wide range of dry materials and conditions of temperature, corrosion and moisture.

SPDT Switch

- No need to power electronics.

HOW TO ORDER Model 'A'



Note: High-temperature switches not available with neoprene diaphragms.

HOW TO ORDER Bantam Bin-Dicator®

| Diaphragm Material | One Switch | Two Switches |
|--------------------|-------------------|-------------------|
| Neoprene (light) | B-1-N, LAB101800 | B-2-N, LAB101936 |
| Teflon® Neoprene | B-1-LT, LAB101808 | B-2-LT, LAB101944 |

Note: Specify if all metal parts exposed within the bin need to be stainless steel.

HOW TO ORDER Auto-Bin-Dicator®

| Diaphragm Material | General Purpose | Explosion-proof |
|--------------------|-----------------|------------------|
| Neoprene | AB-R, LAD101701 | NA |
| T-302 SS | AB-S, LAD101700 | ABX-S, LAD101716 |

Note: Specify if all metal parts exposed within the bin need to be stainless steel.

SPECIFICATIONS

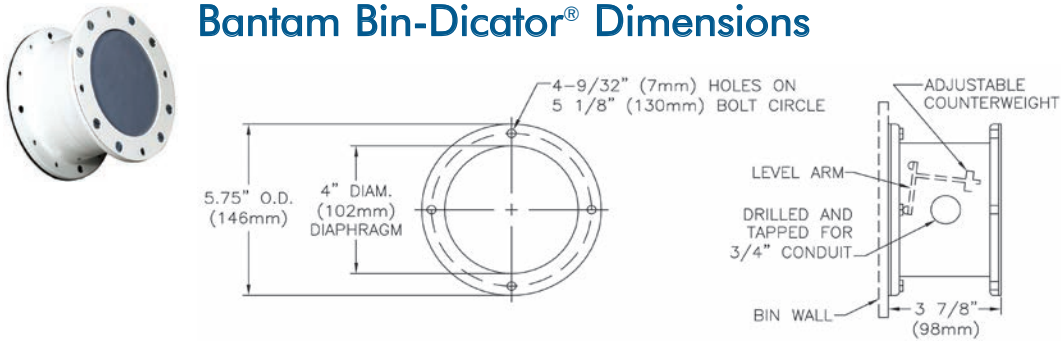
| FUNCTIONAL SPECS | |
|----------------------------|--|
| Switch | General Purpose SPDT; may be wired for normally open (NO) or normally closed (NC) operation |
| | AC Rating 15 amp @ 125, 250 or 480 VAC |
| | DC Rating 1/2 amp @ 125 VDC; 1/4 amp @ 250 VDC |
| | HP Rating 1/8 HP @ 125 VAC |
| Temperature | Explosion-Proof; single-pole double-throw or double-pole double-throw |
| | 1.0 of calibrated span (combined linearity, hysteresis, stability) between 0° and 150° F |
| Optional | 185° F (85° C) standard, Auto and Bantam |
| | 250° F (121° C), 800° F (427° C); Auto and Model "A" |
| PERFORMANCE SPECIFICATIONS | |
| Frame | Polyester-coated aluminum casting |
| Cover | Polyester-coated aluminum casting (Auto and Bantam) |
| | Standard durable ABS white plastic (Model "A") |
| Construction | Weather-proof or explosion-proof (Auto) |
| Diaphragms | Neoprene, Stainless Steel (Auto), Aluminum (Bantam), Steel galvanized back plate; Steel polyester washer (Model "A") |
| Gasket | Rubber (Bantam), Fiber (Model "A") |
| Mounting | Can be mounted on underslopes up to 45 degree (Bantam & Model "A") |
| Shipping Weight | Aluminum 8 lbs (Auto & Bantam), Aluminum 10 lbs (Model "A") |
| APPROVALS | |
| | General Purpose: UL, CSA |
| | Hazardous Location: UL; Class 1, Groups C & D, Class II, Groups E, F, G |
| | CSA: Class 1, Groups C & D, Class II, Groups E, F, G |

DIAPHRAGM SELECTION

| Diaphragm Material | Max. Temp | Product Wt. Cu./Ft. | Application Remarks |
|-----------------------------------|------------------|---------------------|---|
| Neoprene Rubber (light) | 170° F (77° C) | 10-40 | Highest sensitivity, abrasion resistant |
| Neoprene Rubber (medium) | 170° F (77° C) | 30-100 | Strong, resists abrasion, low temperatures |
| Neoprene Rubber (heavy) | 170° F (77° C) | 100-350 | Strong, resists abrasion, low temperatures |
| Canvas | 200° F (93° C) | 10-60 | Powders only |
| Fiberglass | 1000° F (538° C) | 25-100 | Very high temp-see switch temperatures |
| T-302 SS | 800° F (427° C) | 30 Min. | Auto-Bin-Dicator® only |
| Silicone Rubber (heavy) | 450° F (232° C) | 50-150 | Extreme low to medium-high temperature |
| Teflon® Coated Fiberglass (heavy) | 400° F (204° C) | 50-150 | Corrosion resistant, medium-high temperatures |

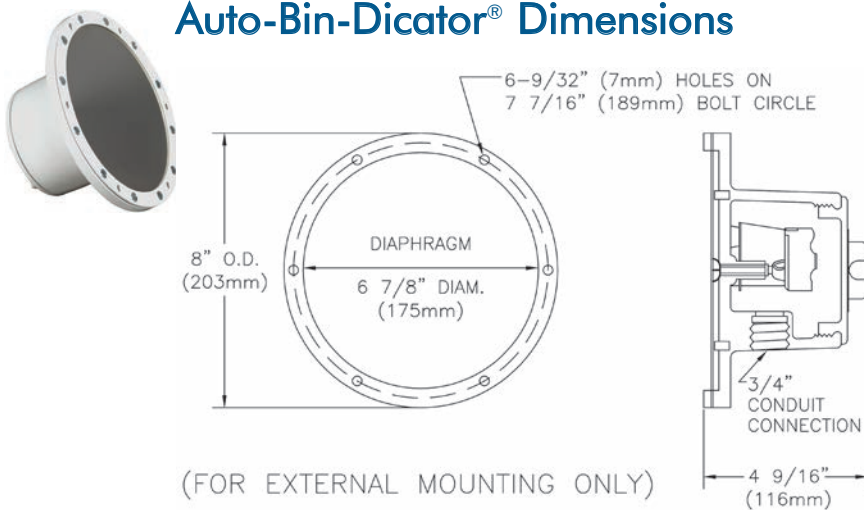
Note: For high temperature applications, special switches may be required in addition to proper diaphragm selection. Please consult factory.

Bantam Bin-Dicator® Dimensions



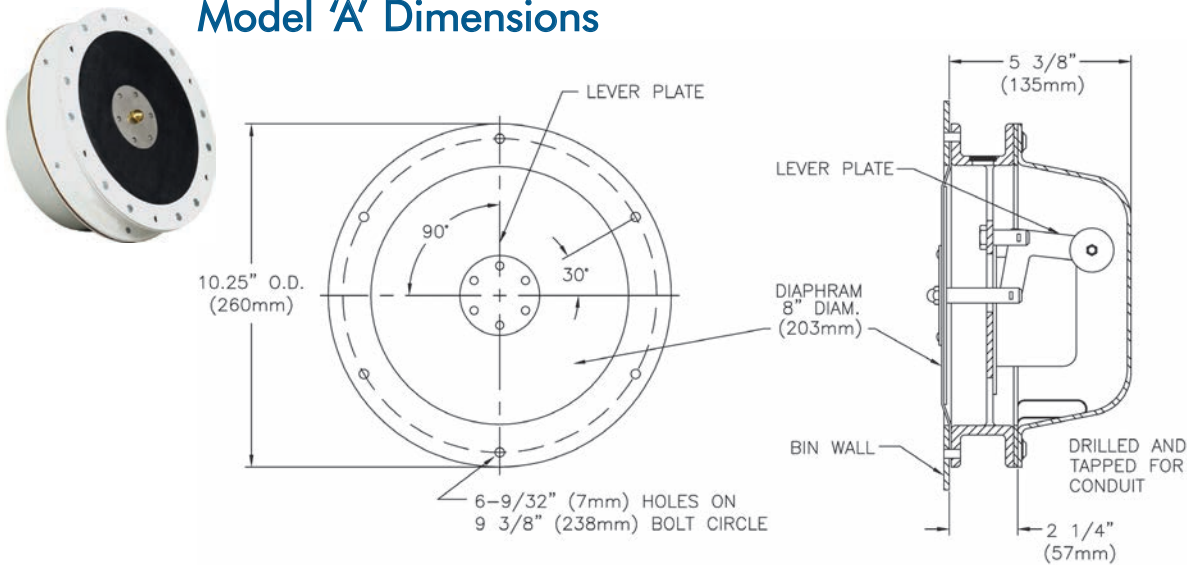
(FOR EXTERNAL MOUNTING ONLY)

Auto-Bin-Dicator® Dimensions



(FOR EXTERNAL MOUNTING ONLY)

Model 'A' Dimensions



(FOR EXTERNAL MOUNTING ONLY)



Order from: **C A Briggs Company**
 622 Mary Street; Suite 101; Warminster, PA 18974
 Phone: 267-673-8117 - Fax: 267-673-8118
Sales@cabriggs.com - www.cabriggs.com

venture
MEASUREMENT

LAA180070 Rev. F
 2012 All rights reserved.
 All data subject to change without notice.