

Relay Controller



Model - ABMXXX - YRCON

Applications - To control pumps and for alarms. To display tank level in % and also volume or mass using Tank Strapping Table.

FEATURES The ABM Relay Controller provides a simple and low cost means of monitoring radar and ultrasonic level measurement devices and controlling pumps and alarms according to the level measured.

The controller has one input to measure 4-20mA current from a level transducer and provide 24 VDC to a level device.

Current is displayed as a percentage. There are two settings: 4mA=100% and 20mA=0% or 4mA=0% and 20mA=100%. The setting is made with a movable link on the circuit board.

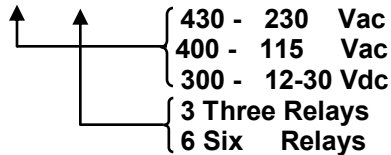
The controller has the option of Three or Six Relays as required for the application, which can be set to control pumps or alarms. The transducer current and set points, which are programmed into the controller, independently, for each relay control the relay operations.



Relay Controller
Model - #ABMXXX - 6RCON

CATALOGUE # - Ordering

#ABMXXX - YRCON -TST ← 33 Point "Tank Strapping Table"



Specification

Power: AC version 120V or 240V, 50/60Hz, 6VA
DC version 12- 30V, 0.25A

Mechanical:
Enclosure: Polycarbonate UL94-2
Ingress Protection : Nema 4X, IP66 Wall Mount

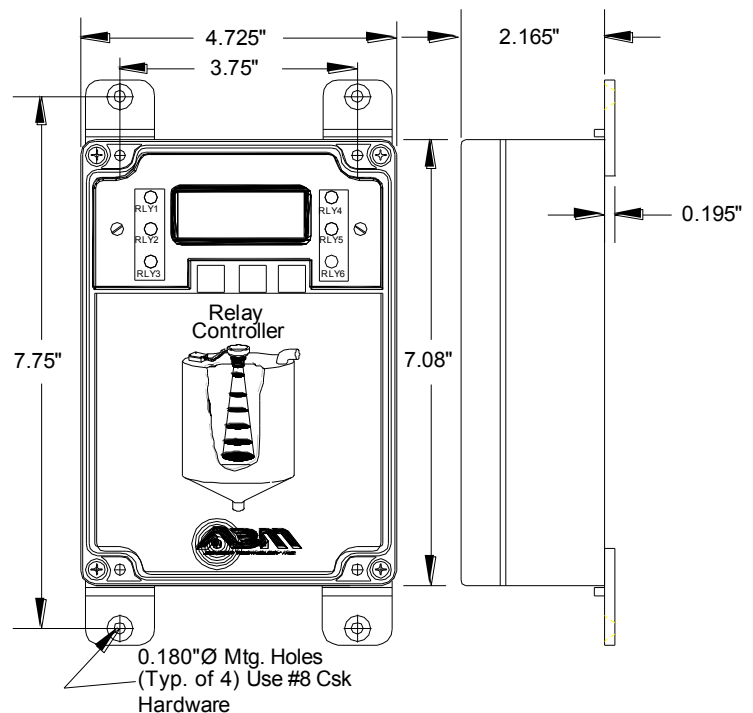
Environmental:
Temperature: - 5 to 122°F (-20 to 50°C)
Humidity : 0 to 95% Non-Condensing

Inputs:
Resistance : 10 Ohm
Current : 0 to 25mA (max. overload 70mA)

Outputs:
Display :Range +112% (21mA) to -14% (0mA)
100%= 20mA, 0%= 4mA
or 0%= 20mA, 100%= 4mA
>22mA = LOE (Loss of Echo)
DC Supply: 24V, 100mA (AC version)

Model 3RCON :Three Relays - 2 relays each with a form A normally open contact
- 1 relay with a form C contact.
Contact rating: 8A at 240 VAC non-inductive

Model 6RCON :Six Relays - 4 relays each with a form A normally open contact
- 2 relay with a form C contact.
Contact rating: 8A at 240 VAC non-inductive



Relay Controller Enclosure

OCM - Open Channel Meter



Model - ABM-OCM-2- OPEN CHANNEL METER

Applications -

OCM Controller measures liquid level and calculates, flow rate for all different types of Flumes, and Weirs. It is ideal for Water/ Wastewater due to their maintenance free nature, any build up on the Mini transducer face is being eliminated (continuously cleaned). It is also capable of operating on Liquids with foam on surface with the use of ABM Radar measuring sensor.



Benefits -

- OCM Controller's enclosure is suitable for IP65 environmental conditions.
- Self adjusting ABM sensor eliminates false echoes.
- Sensors are available in different materials to withstand any environment
- Very narrow radiation beam of sensor allows installation very close to flumes wall.
- Works at any Temperature
- No rain influence.
- No wind and temperature influence.
- ABM sensors are connected to OCM controller using RS485 in Modbus RTU protocol.

Specification

Power : AC version 120V or 240V, 50/60Hz, Max. Current : 0.2 A

Accuracy of Flow : 3 to 5%

Programming : Keypad with 6 Keys (2 x 3 matrix)

Display : 2 x 16 Digits

Mechanical :

Enclosure: ABS UL94-2
Ingress Protection : Nema 4X , IP65 Wall Mount

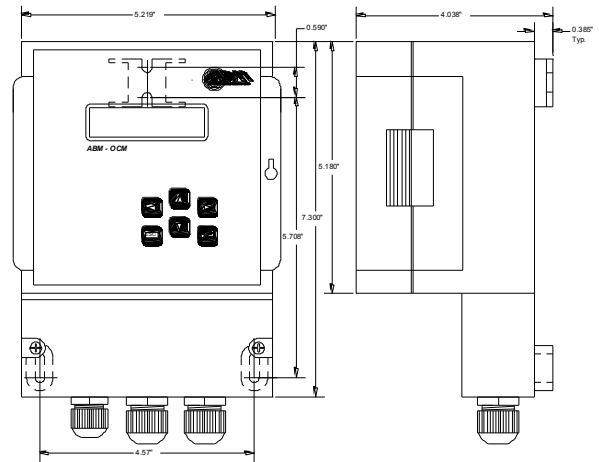
Environmental:

Temperature: - 40 to 140°F (- 40 to 60°C)
Humidity : 0 to 95% Non-Condensing

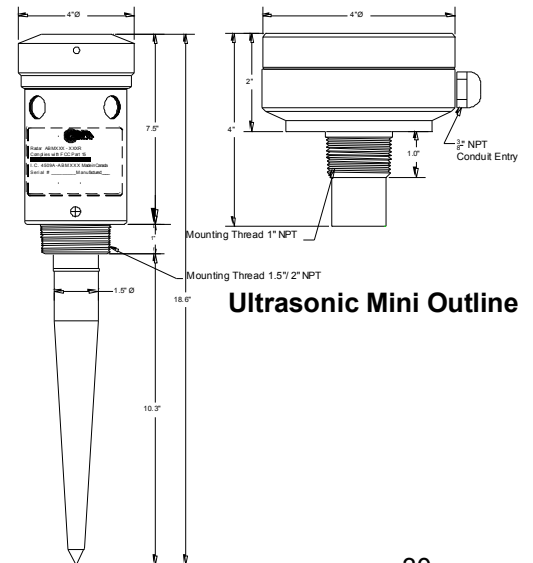
Outputs: 4 - 20 mA (max. load 750 Ω)

Three Relays - 2 relays Programmable each with a form A normally open contact
- 1 relay Alarm with a form C contact.
Contact rating: 5A at 240 VAC non-inductive

OCM Enclosure



OCM Enclosure Outline



Ultrasonic Mini Outline

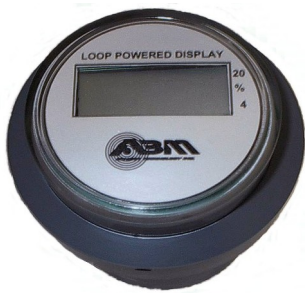
Radar Outline

Readout Loop Powered Display



Model - LPD - PM - 02
 LPD - WM - 02

Applications - To display level in %, Meters, Feet, Gallons, Liters



Model - #LPD-PM-02
 Loop Powered Display - Probe Mount



Model - #LPD-WM-02
 Loop Powered Display - Wall Mount

FEATURES - #LPD-XX-02 Programmable Display for Meters, Feet and User Defined Units

The ABM Display, Model LPD-XX-02 current loop powered display indicates the percentage full or empty of the tank whose level is being monitored by a sensor with a 4-20 Ma output. The display can also be calibrated in Meters, Feet or User Defined units. The display can be changed to indicate 100% at 4mA or 20mA by simply moving an internal link. The display is packaged in a compact NEMA 4X enclosure which can be wall mounted or probe mounted.

Catalogue #LPD-XX-02

↑ WM - wall mount
 PM - probe mount

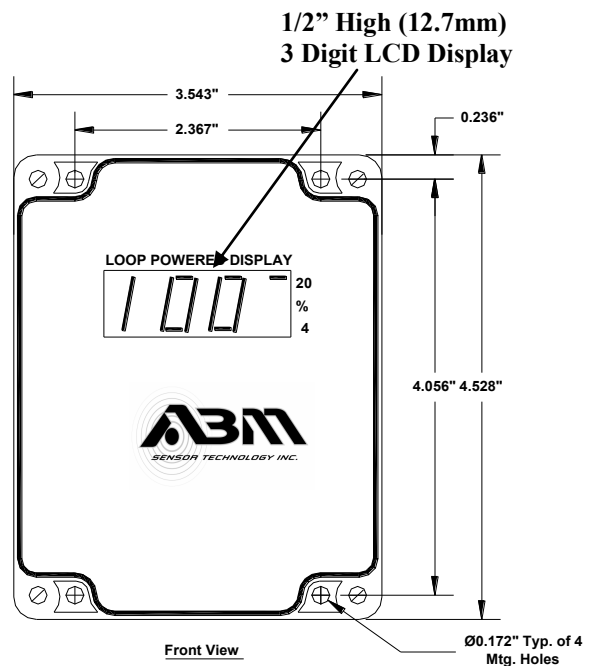
Specification:

- Display : - 4 1/2 Digit LCD 1/2"(12.7mm) High
- Temperature: - 40 to 140°F (-40 to 60°C)
- Voltage Drop: 0.95V @ 20mA
- Accuracy : Reading +/-0.5%
- Humidity : 0 - 95% Non-Condensing
- Range : 3.5 mA to 22mA
- Maximum current: 150 mA
- Display Range :
 - Normal : 100% @ 20mA - 3% to + 112%
 - 0% @ 4mA
 - Reverse : 100% @ 4mA - 12% to +113%
 - 0% @ 20mA
 - 22mA and above = LOE (Loss of Echo)

Mechanical:

Enclosure : Polycarbonate UL94-2
 Ingress Protection: Nema 4X, IP66 Wall Mount

Enclosure Outline:



Refer to Catalogue Number above for ordering Information.