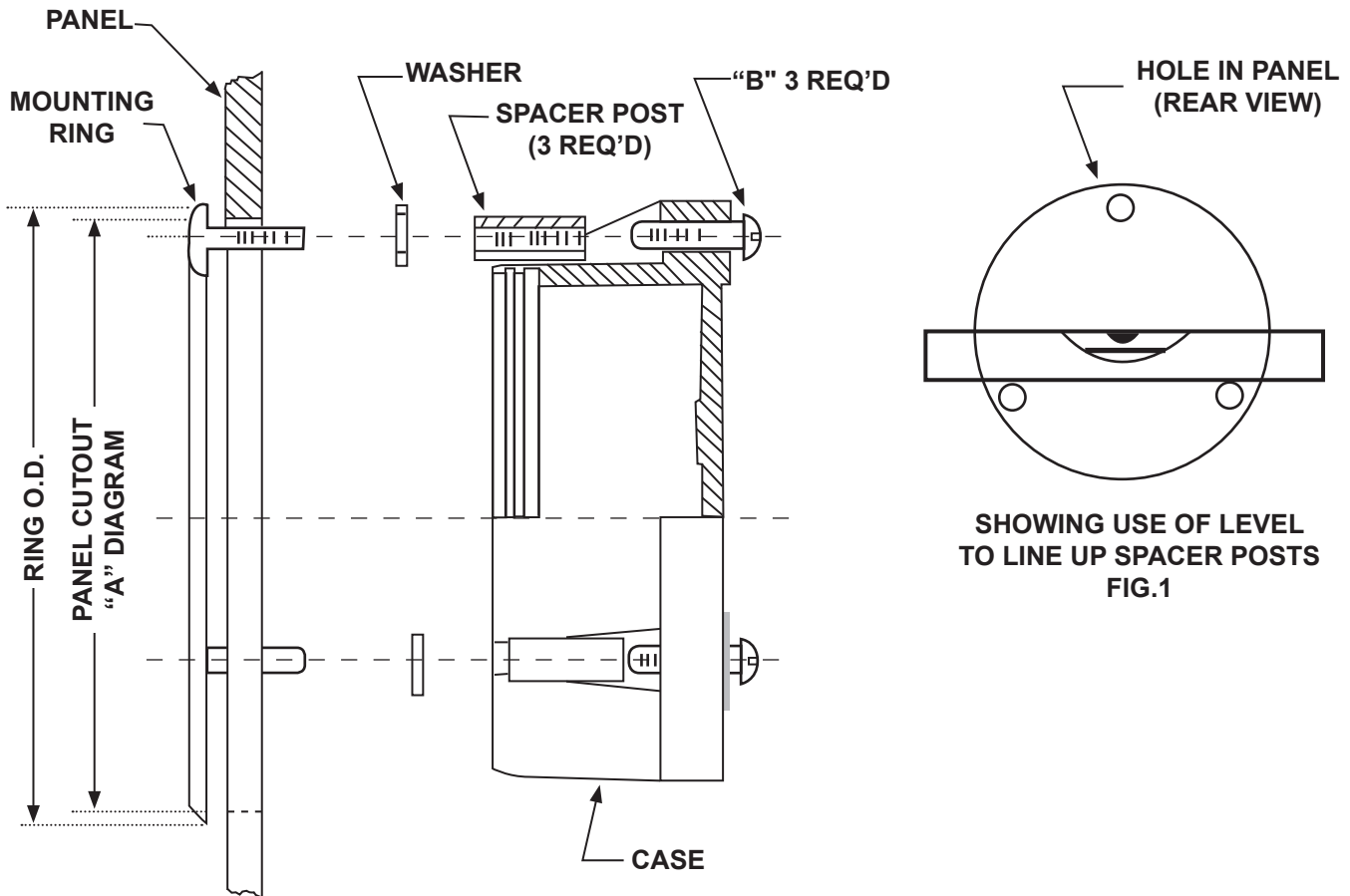


APPLICATION

For Assembling PDA2005 Flush Mounting Ring to
4½ Phenol Turret Case Gauge.



INSTRUCTIONS

1. Cut hole in panel to "A" diameter.
2. Apply mounting ring from front side of panel so that the ring studs enter panel hole.
3. Assemble washers as required by panel thickness, i.e., no washers for 5/16" panel, one washer for 1/4" panel, two washers for 3/16" panel, and three washers for 1/8" panel.
4. Assemble three spacer posts just loose enough to permit rotation of ring in panel.
5. Lay a level across two lower spacer posts and rotate ring as necessary to bring posts to a horizontal line (see Fig. 1).
6. Tighten all spacer posts.
7. Assemble case to spacer posts with three screws.

Ring O.D.	"A" DIA.	"B" Size of 3 Screws	"C" Size of Washers
6.000 (152)	5⅝ (148)	#10-24 x ¾	7/16 x 17/64 x 5/8

Order from:

C A Briggs Company

622 Mary Street; Suite 101

Warminster, PA 18974

Phone: 267-673-8117 - Fax: 267-673-8118

Sales@cabriggs.com - www.cabriggs.com