

METERVIEW® PRO SOFTWARE



MeterView® Pro

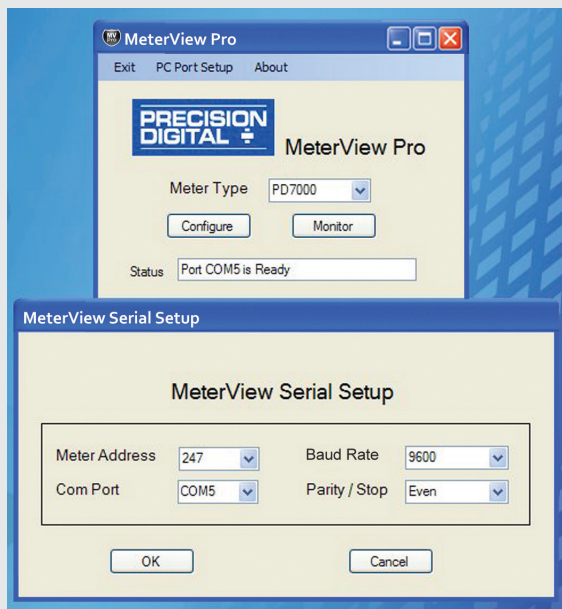
Configure, monitor, and datalog any ProVu model from a PC.

Requires serial adapter

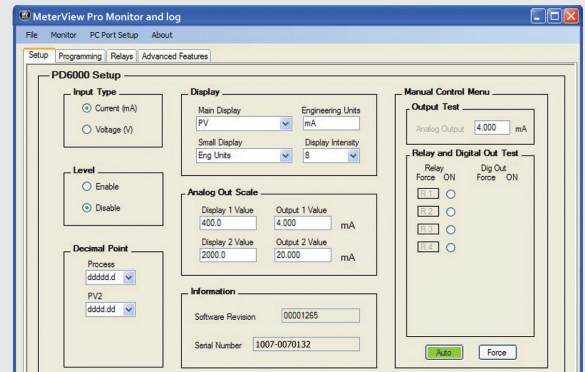
METERVIEW® PRO SOFTWARE

Configure, monitor, or datalog any PROVu series meter using the PC-based MeterView Pro (MVP) software. MVP is available as a free download at www.predig.com (serial communications adapter required). MVP makes complete meter configuration simple and fast. Copying one meter configuration to another, as well as saving or retrieving a meter configuration file is a snap. MVP's linearization utility makes even a 32-point linearization task clear and easy to do. We also included a basic meter monitor and datalogger for use with a PROVu. Of course, with PROVu's powerful Modbus protocol, custom programs can be made even more versatile.

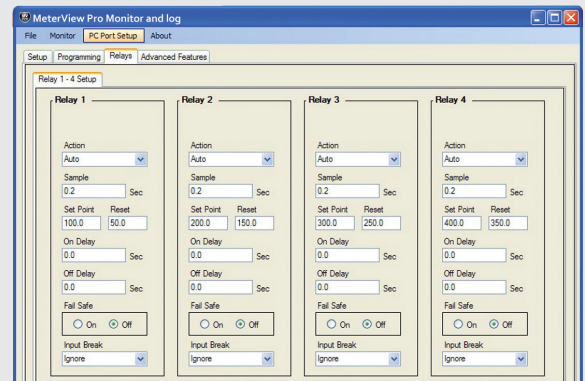
Communications Setup



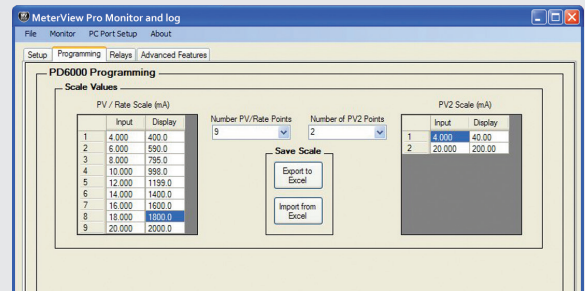
Setup



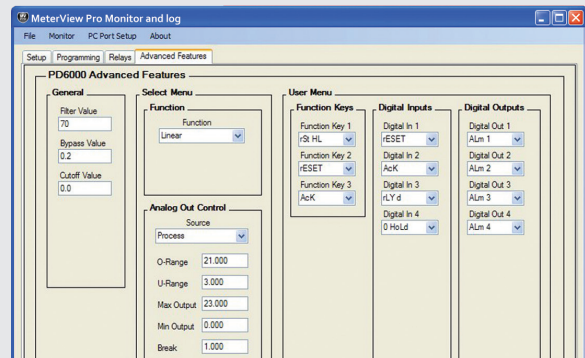
Relays

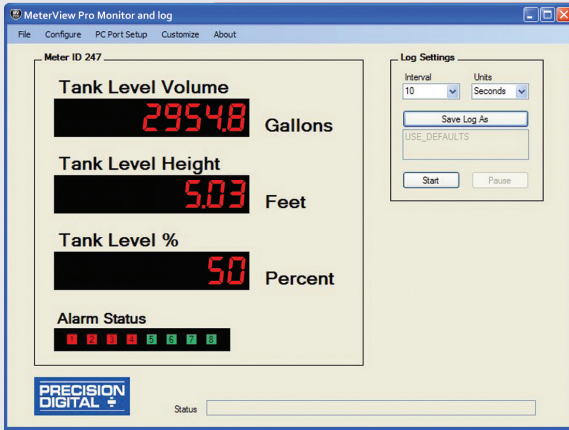


Linearization Utility



Advanced Features



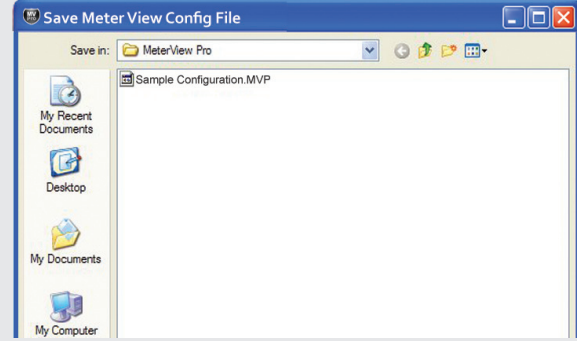


Name: C:\Program Files\MeterView Pro\Furnace 3.csv Created 8/10/2010 3:22:37 PM

Meter ID: 247 Serial Port: COM5 Logging Rate: 1 update every 5 Seconds

Date & Time	Tag1	Display	Units	Tag2	Display	Units	Tag3	Display	Units	R1	R2	R3	R4
8/10/2010 3:22	Furn 3	235	Deg F	MAX	247	Deg F	MIN	207	Deg F	On	On	Off	Off
8/10/2010 3:22	Furn 3	236	Deg F	MAX	247	Deg F	MIN	207	Deg F	On	On	Off	Off
8/10/2010 3:22	Furn 3	238	Deg F	MAX	247	Deg F	MIN	207	Deg F	On	On	Off	Off
8/10/2010 3:22	Furn 3	239	Deg F	MAX	247	Deg F	MIN	207	Deg F	On	On	Off	Off
8/10/2010 3:22	Furn 3	239	Deg F	MAX	247	Deg F	MIN	207	Deg F	On	On	Off	Off
8/10/2010 3:23	Furn 3	240	Deg F	MAX	247	Deg F	MIN	207	Deg F	On	On	Off	Off
8/10/2010 3:23	Furn 3	241	Deg F	MAX	247	Deg F	MIN	207	Deg F	Off	Off	On	Off
8/10/2010 3:23	Furn 3	242	Deg F	MAX	247	Deg F	MIN	207	Deg F	Off	Off	On	Off
8/10/2010 3:23	Furn 3	241	Deg F	MAX	247	Deg F	MIN	207	Deg F	Off	Off	On	Off
8/10/2010 3:23	Furn 3	241	Deg F	MAX	247	Deg F	MIN	207	Deg F	Off	Off	On	Off
8/10/2010 3:23	Furn 3	240	Deg F	MAX	247	Deg F	MIN	207	Deg F	Off	Off	On	Off
8/10/2010 3:23	Furn 3	240	Deg F	MAX	247	Deg F	MIN	207	Deg F	Off	Off	On	Off
8/10/2010 3:23	Furn 3	239	Deg F	MAX	247	Deg F	MIN	207	Deg F	Off	Off	On	Off
8/10/2010 3:23	Furn 3	239	Deg F	MAX	247	Deg F	MIN	207	Deg F	Off	Off	On	Off
8/10/2010 3:23	Furn 3	238	Deg F	MAX	247	Deg F	MIN	207	Deg F	Off	Off	On	Off
8/10/2010 3:23	Furn 3	238	Deg F	MAX	247	Deg F	MIN	207	Deg F	Off	Off	On	Off
8/10/2010 3:23	Furn 3	237	Deg F	MAX	247	Deg F	MIN	207	Deg F	Off	Off	On	Off
8/10/2010 3:24	Furn 3	237	Deg F	MAX	247	Deg F	MIN	207	Deg F	Off	Off	On	Off
8/10/2010 3:24	Furn 3	238	Deg F	MAX	247	Deg F	MIN	207	Deg F	On	On	Off	Off
8/10/2010 3:24	Furn 3	238	Deg F	MAX	247	Deg F	MIN	207	Deg F	On	On	Off	Off
8/10/2010 3:24	Furn 3	239	Deg F	MAX	247	Deg F	MIN	207	Deg F	On	On	Off	Off

Meter Configuration PD7000	Date: 08/10/2010
Meter Input:	Temperature - RTD Type 100 Ohm (385) input in Deg F
Temperature :	0 decimal places
Display Intensity:	8
Main Display:	PV
Small Display:	Eng Units - Furn 3
Filter Value:	70
Bypass Value:	0.2
Analog Out Source:	Process
Analog Out Over Range:	21.000 mA
Analog Out Under Range:	3.000 mA
Analog Out Break:	1.000 mA
Analog Out Maximum:	23.000 mA
Analog Out Minimum:	0.000 mA
Analog Out Scale Display 1:	0.0 Deg F
Analog Out Scale Display 2:	1000.0 Deg F
Analog Out Scale Output 1:	4.000 mA
Analog Out Scale Output 2:	20.000 mA
Manual Test:	Auto
Relays:	R1=Off, R2=Off, R3=Off, R4=Off
Digital Output :	
Manual Analog Output:	4.000 mA
Temperature Adjust:	0.0
RTD Total:	1
Relay 1 Mode:	Action= Sample Fail Safe= Off, Break Input= Ignore
Relay 1 Set Point:	11 Deg F
Relay 1 Reset Point:	0 Deg F
Relay 1 On Delay:	0.0Sec
Relay 1 Off Delay:	0.0Sec
Relay 1 Sample:	1.2
Relay 2 Mode:	Action= Auto Fail Safe= Off, Break Input= Ignore
Relay 2 Set Point:	200 Deg F



SPECIFICATIONS

System Requirements: Windows® 2000/XP/Vista/7*
Communications: RS-232 Adapter or RS-422/485 Adapter
Meter Address: 1 - 247
Reports:

- Data logging: Save as CSV file format
- Configuration: Save as PDC file format or print configuration

Baud Rate: 300 - 19,200 bps

Configuration: One meter at a time

Protocol: Modbus RTU (requires ProVu firmware version 2.0 or higher)

*Note: Windows® 32-bit operating systems only

ORDERING INFORMATION

Free MeterView® Pro Software	
Free software download at www.predig.com/meterviewpro	

Accessories	
Model	Description
PDA1232	RS-232 Serial Adapter
PDA1485	RS-422/485 Serial Adapter
PDA7485-I	RS-232 to RS-422/485 Isolated Converter
PDA7485-N	RS-232 to RS-422/485 Non-Isolated Converter
PDA8232-N	USB to RS-232 Non-Isolated Converter
PDA8485-I	USB to RS-422/485 Isolated Converter
PDA8485-N	USB to RS-422/485 Non-Isolated Converter

Your Local Distributor is:

Order from:
C A Briggs Company
 622 Mary Street; Suite 101
 Warminster, PA 18974
 Phone: 267-673-8117 - Fax: 267-673-8118
Sales@cabriggs.com - www.cabriggs.com

Disclaimer

The information contained in this document is subject to change without notice. Precision Digital Corporation makes no representations or warranties with respect to the contents hereof, and specifically disclaims any implied warranties of merchantability or fitness for a particular purpose. ©2010-2016 Precision Digital Corporation. All rights reserved.