

## DUPLEXER

MADE IN  
THE U.S.A.

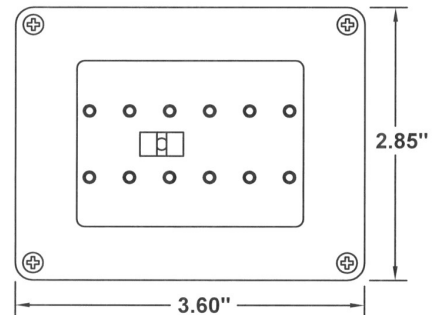
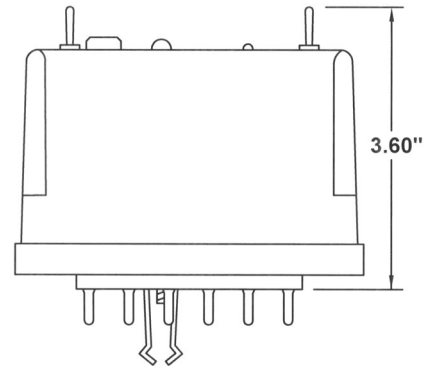


### FEATURES:

- Float or Conductance Probe Level Inputs
- Duplex Alternation
- Level Input Indication
- Pump Call Indication
- High Level Alarm Indication
- Power On Indication
- Surge Protected Level Inputs
- Power Up and Lag Pump Delays
- Level Simulation Push-Button
- HOA and Lead Select Switches
- Pump Call and High Level Alarm Relays
- RS232 Serial Port with Modbus RTU Protocol

### UL FILE # E101681

UL Listed only when  
used with an  
SD12 or SD12-PC socket.

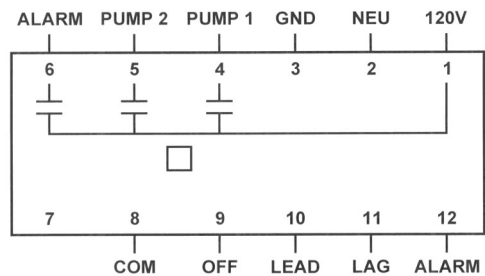


### DESCRIPTION

The DUPLEXER is a low cost SCADA ready pump controller designed to perform level control for duplex lift station applications. The level inputs can be connected to either four float switches or to a conductance probe. The Duplexer provides a 10 second power-up start delay, 5 second lag pump delay, and duplex alternation. LEDs provide power on status, level input status, pump call status, and high level alarm status indication. Pump 1&2 call and high level alarm relays are provided. HOA and lead select toggle switches are also provided. The high level status indication latches upon high level, until reset by pressing the reset push-button (the relay does not stay latched). Level simulation is accomplished by pressing and holding the push-button. Releasing the push-button allows the simulated level to return to normal. Connecting the serial port to a SCADA system allows the lift station to be monitored and controlled remotely. By connecting a programming device to the serial port (MPE p/n TSID), a number of settings may be accessed to customize the unit.

### SPECIFICATIONS

Input Power:	120VAC $\pm$ 10%, 10VA max
Relay Outputs:	6A Resistive @ 120VAC 3.6A Inductive @ 120VAC
Agency Approval:	UL 508, CAN/CSA
Indicators:	LED's
Sensor Output Voltage:	$\pm$ 12V Square wave
Sensor Output Current:	$\pm$ 1.2mA max (per sensor)
Operating Temp:	-20 to +60 °C
Storage Temp:	-45 to +85 °C
Enclosure:	Lexan
Base:	Rhynite



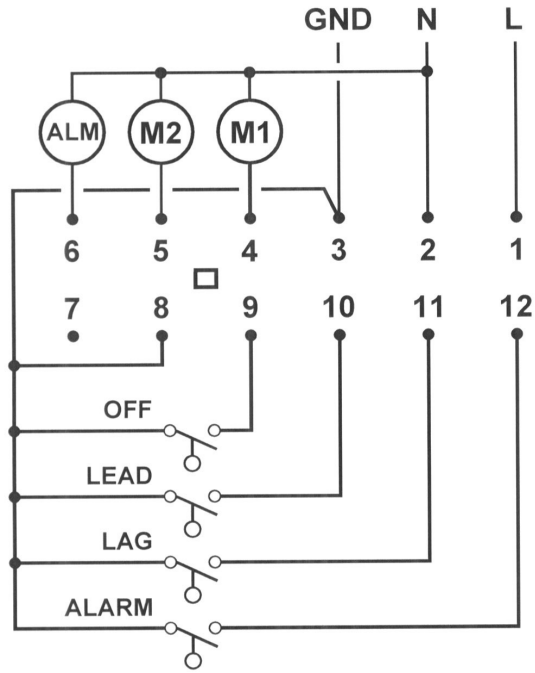
### ORDERING INFORMATION

**Part Number:** 010-120-122P

# DUPLEXER

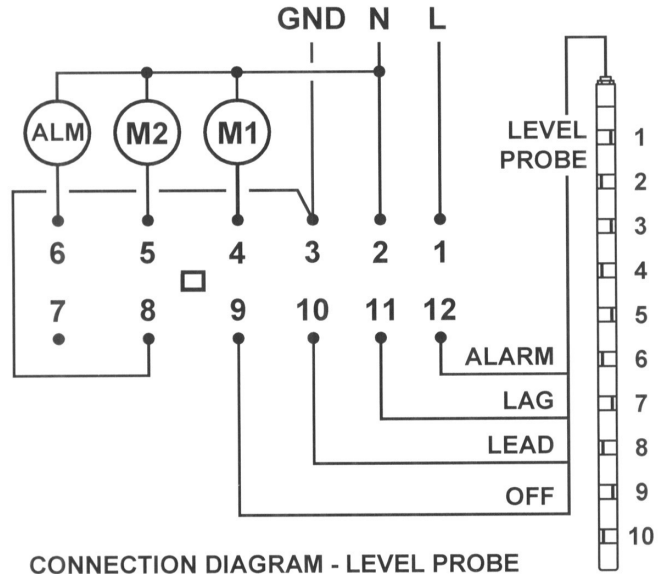
## CONNECTION DIAGRAMS

### FLOAT SWITCH



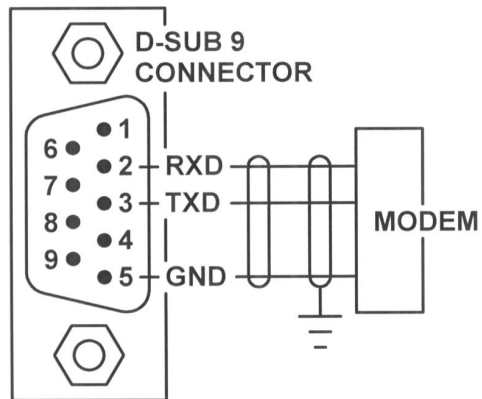
CONNECTION DIAGRAM - FLOAT SWITCH

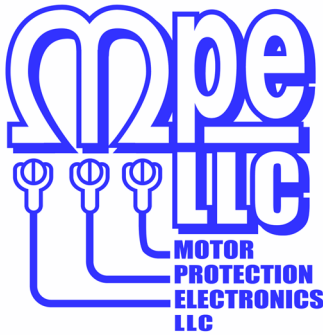
### LEVEL PROBE



CONNECTION DIAGRAM - LEVEL PROBE

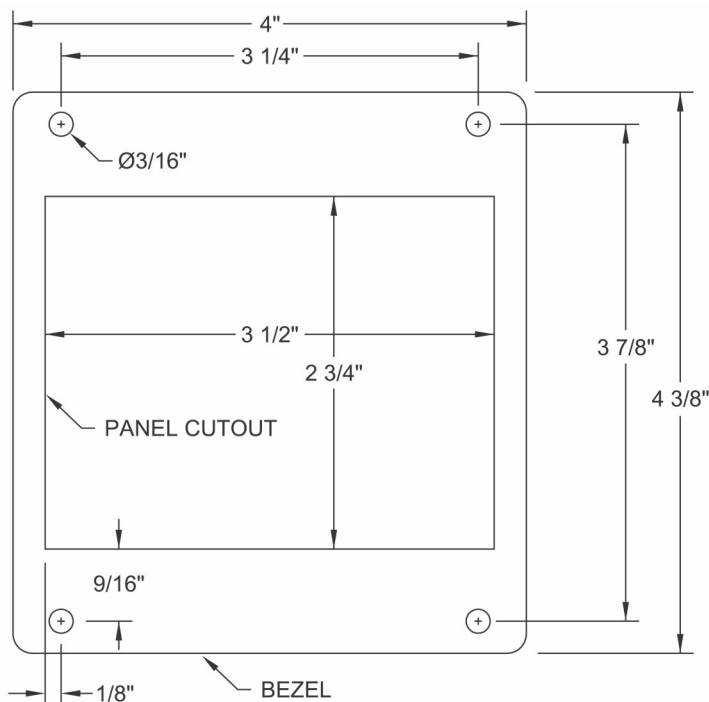
### SERIAL PORT





## DUPLEXER MOUNTING BRACKET KIT

**MADE IN  
THE U.S.A.**



The Duplexer Mounting Bracket Kit provides a simple and economical method of securing a Duplexer Controller to the deadfront of a control panel.

### TYPICAL APPLICATIONS

- Where the HOA switches, lead select switch and station status indication must be on the deadfront.

### FEATURES

- Sturdy aluminum construction.
- Stainless steel Mounting hardware included.
- Faceplate painted white to match Duplexer Enclosure.

### ORDERING INFORMATION

Bracket Kit - Part Number: DUPMK-W

12 Pin Socket - Part Number: SD12-PC

(Must Order 12 Pin Socket Separately)

Order from: **C A Briggs Company**; 622 Mary Street; Suite 101 - Warminster, PA 18974  
Phone: 267-673-8117 - Fax: 267-673-8118; E-Mail: [Sales@cabriggs.com](mailto:Sales@cabriggs.com) - [www.cabriggs.com](http://www.cabriggs.com)