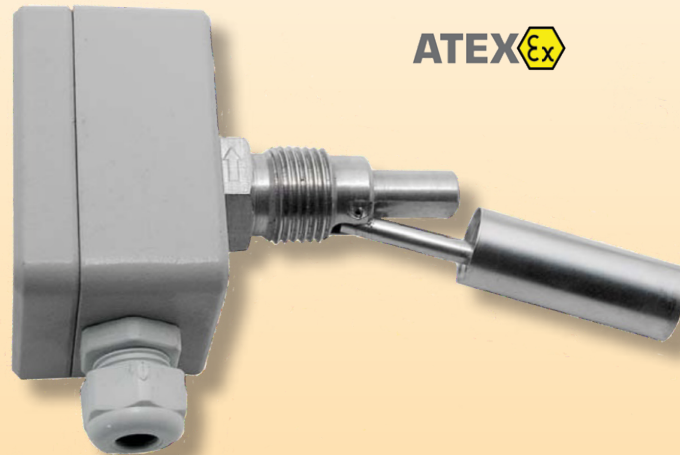


Level Switch

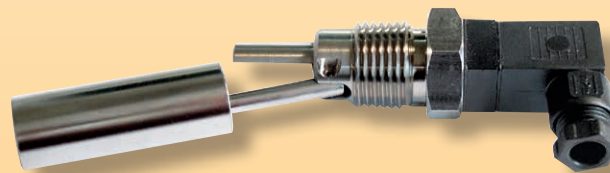


measuring
•
monitoring
•
analyzing

RFS



ATEX 



- For Horizontal Mounting
- Electrical Connection: DIN Plug or Aluminum Housing
- 304 Stainless Steel Construction
- N/O or N/C Contact Function



Order from: **C A Briggs Company**

622 Mary Street; Suite 101; Warminster, PA 18974

Phone: 267-673-8117 - Fax: 267-673-8118

Sales@cabriggs.com - www.cabriggs.com

KOBOLD Instruments, Inc.
1801 Parkway View Drive
Pittsburgh, PA 15205

Description

The KOBOLD RFS is designed for horizontal installation and economical monitoring of fill levels. A pivoting stainless steel float with an integral magnet moves with the liquid level and switches a reed contact. The media cannot contain any solids or metallic particles. The contact can work as normally open or normally closed, depending on the mounting position.

Specifications

Media Temperature: -40...248 °F (-40...120 °C)

Ambient Temperature

RFS-1200N4, -1201N4: -4...176 °F (-20...80 °C)

RFS-12ExN4: -4...140 °F (-20...60 °C)

Operating Pressure: Max. 72 PSIG (5 bar)

Installation Position: Horizontal

Materials

Housing/Plug: Plastic (RFS-1200), Aluminum (RFS-1201 and RFS-12ExN4)

Float: 304 Stainless Steel

Connection: 304 Stainless Steel

Process Connection: 1/2" NPT

Electrical Connection

RFS-1200N4: DIN Plug with Mating Connector

RFS-1201N4, -12ExN4: Terminals in Aluminum Connection Box

Contacts: N/O or N/C, Depending on Mounting Position

Switching Voltage

RFS-1200N4, -1201N4: Max. 240 VAC/300 VDC

RFS-12ExN4: Max. 40 VDC

Switching Current: Max. 0.5 A

Switching Capacity

RFS-1200N4, -1201N4: Max. 15 VA

RFS-12ExN4: Max. 4 VA

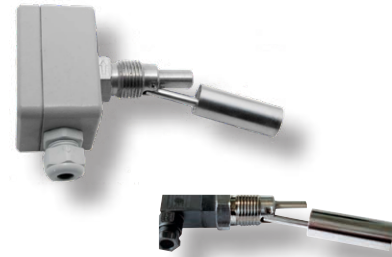
Contact Resistance: Max. 150 mΩ

Media Density: > 0.7 g/cm³

ATEX Marking (RFS-12ExN4)

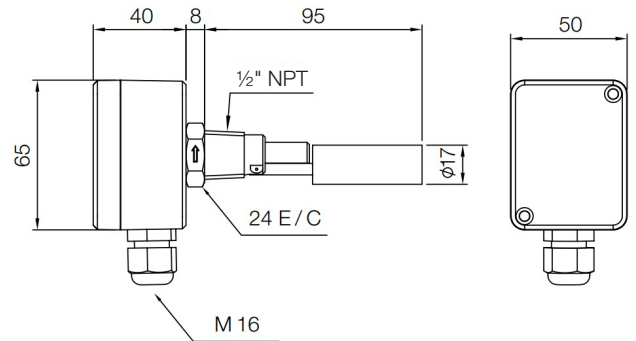
Gas: II 1 GD Exia II CT6

Dust: II 2/1D ExtD A21 IP65 T 85°C

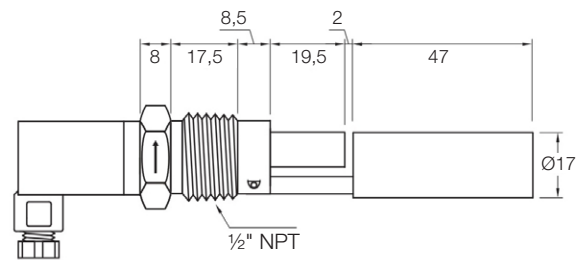


Dimensions (mm)

RFS-1201N4, -12ExN4



RFS-1200N4



Order Details (Example: RFS-1200N4)

Model	Description
RFS-1200N4	Standard Version, Plug Connection
RFS-1201N4	Standard Version, Housing Connection
RFS-12ExN4*	ATEX Version for Hazardous Areas

* An Approved I.S. Barrier Relay is Required for Use in Hazardous Areas