

Rotating Vane Flow Indicator for Liquids



measuring
•
monitoring
•
analyzing

DIG



- Range: 0.13...3.2 GPM to 0.79...21 GPM (Water)
- Connection: 1/8" ...1" NPT
- Housing: Brass, Stainless Steel, or Polypropylene
- p_{max} : 230 PSI
- t_{max} : 176 °F
- ΔP at Max. Flow: 14.5 PSI



KOBOLD companies worldwide:

Order from: **C A Briggs Company**
622 Mary Street; Suite 101; Warminster, PA 18974
Phone: 267-673-8117 - Fax: 267-673-8118
Sales@cabriggs.com - www.cabriggs.com



Rotating Vane Flow Indicator Model DIG

Key Features

- Range: 0.13...3.2 GPM to 0.79...21 (GPM Water)
- Connection: 1/8" ...1" NPT
- Housing: Brass, Stainless Steel, or PP
- p_{max} : 230 PSI
- t_{max} : 176 °F
- ΔP at Max. Flow: 14.5 PSI

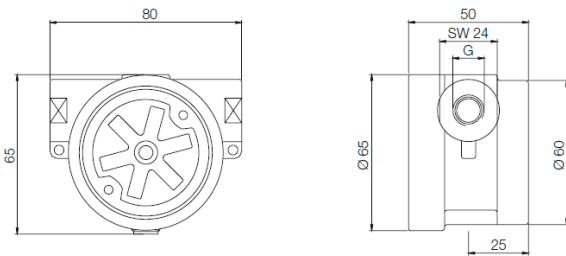


Material Combination

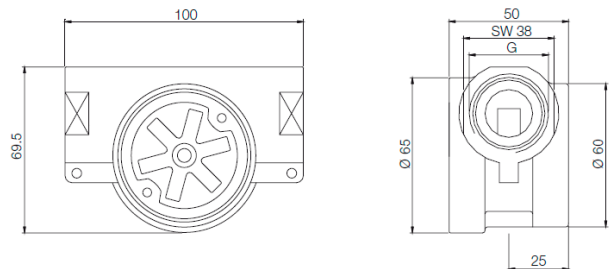
	DIG-11...	DIG-14...	DIG-18...
Housing	Brass	SS (1.3955)	Polypropylene
Cover	Polysulfone	Polysulfone	Polysulfone
Seal	NBR	FKM	NBR
Vane Wheel	Polypropylene	Polypropylene	Polypropylene
Axle	Ceramic	Ceramic	Ceramic
p_{max}	230 PSI	230 PSI	100 PSI
t_{max}	176 °F	176 °F	176 °F

Dimensions (in mm)

DIG-1...N06, DIG-1...N08, DIG-1...N15



DIG-1...N20, DIG-1...N25



Order Details (Example: DIG-1435G N25)

Range (GPM Water)	Model Number			Connection
0.13...3.2	DIG-1105G..	DIG-1405G..	DIG-1805G..	..N06 = 1/8" NPT
0.26...6.6	DIG-1110G..	DIG-1410G..	DIG-1810G..	..N08 = 1/4" NPT
0.53...12	DIG-1120G..	DIG-1420G..	DIG-1820G..	..N15 = 1/2" NPT
0.53...13	DIG-1130G..	DIG-1430G..	DIG-1830G..	..N20 = 3/4" NPT
0.79...21	DIG-1135G..	DIG-1435G..	DIG-1835G..	..N25 = 1" NPT

*At max. flow

Order from: **C A Briggs Company**

622 Mary Street; Suite 101; Warminster, PA 18974

Phone: 267-673-8117 - Fax: 267-673-8118

Sales@cabriggs.com - www.cabriggs.com

No responsibility taken for errors; subject to change without prior notice.